

1999-2000

Raymon H. Mulford Library

Annual Report

Medical College of Ohio
Toledo, Ohio

Executive Summary

This year's preparation for the 2001 North Central Accreditation review presented an opportunity to assess the library's performance. In Spring 2000, a survey was sent to faculty and students asking their opinions on library services and resources. The returns showed satisfaction rates of 93 – 97% for its staff assistance, facilities, computer resources, and for the number and quality of its databases. Only the quality of the book and journal collections were rated lower, at 85% and 87% respectively. A number of critical comments were received on this item.

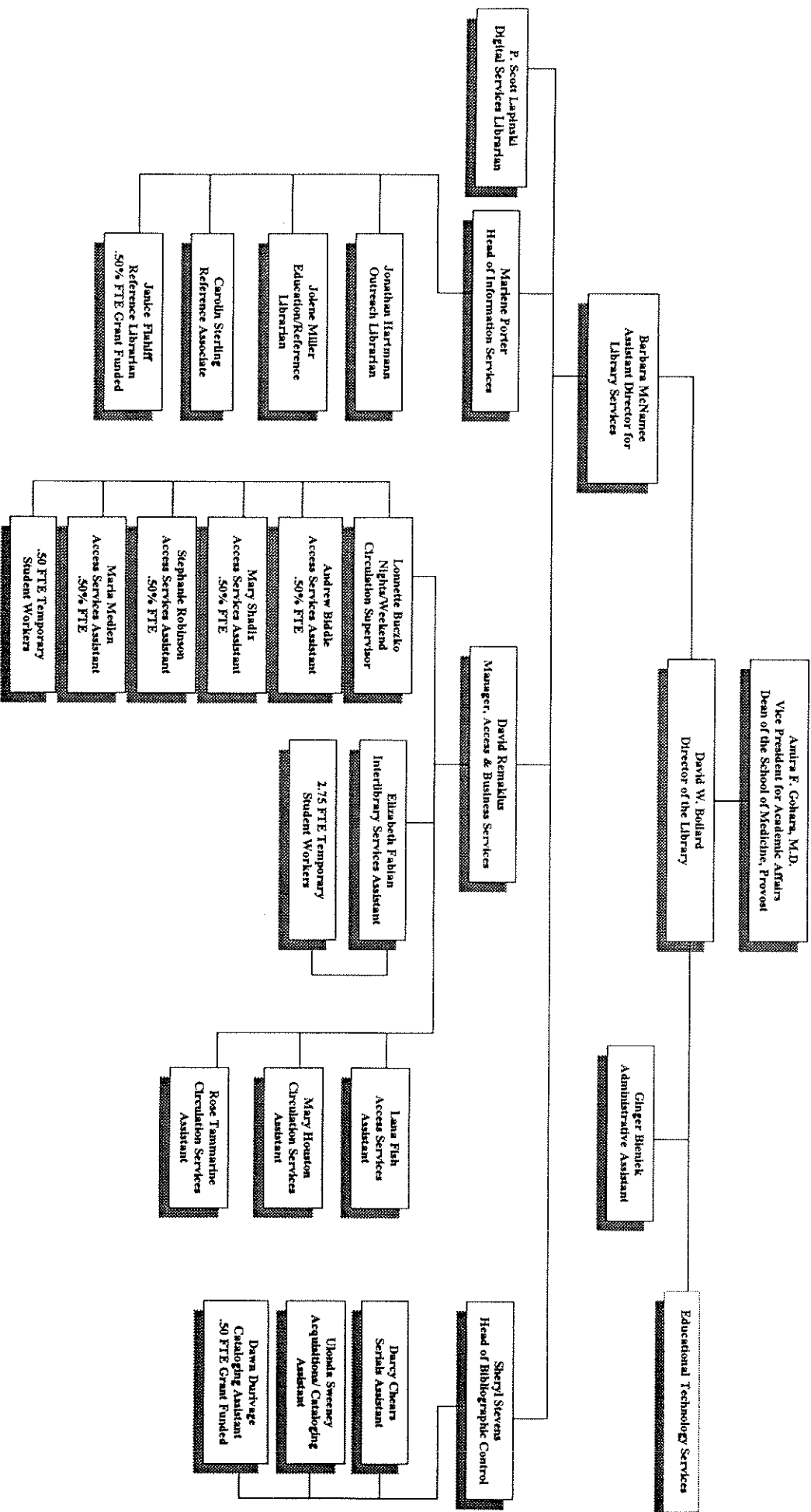
The loss of several half-time permanent and student assistant positions proved difficult for maintaining high quality services. Interlibrary loan service suffered a slow-down and the journal use analysis had to be discontinued. But library managers were able to minimize the disruption of primary services through creative scheduling and careful planning. Further staff erosion, however, will result in more deleterious consequences.

Meanwhile, the role of the librarian is evolving along with that of digital collections and services. Despite predictions in the early 1990's about the demise of libraries, librarians are busier than ever. They have become involved in teaching information management skills, collaborating with educators on integrating electronic resources into curricula, negotiating license agreements for specialized databases and full-text materials, facilitating 'problem-based learning' groups, serving on multiple committees and task forces, and interviewing medical school applicants.

Librarians received a number of awards and recognition this year. They include an award for the "Instructions to Authors" web site from Links2Go a group which ranks health web sites; a Research Development Project Grant award from the Medical Library Association; and a recognition plaque from a community health organization for an outreach project which supports healthcare services to Hispanic migrant workers.

David W. Boilard
Director
Raymon H. Mulford Library

Raymon H. Mulford Library
Library Services Division
Organization Chart
June 30, 2000



Raymon H. Mulford Library **Expenditures for Fiscal Year 1999/2000**

	State Account 3100000	External User Fee 9613100	Foundation Account 174	Total Expenditures
Beginning Balance	\$1,702,380	\$19,780	\$1,769	
100 - Salaries	804,710	2,106	0	\$802,816
200 - Fringe Benefits	170,141	314	0	170,491
Payroll Accrual	(21,795)			(21,795)
TOTAL PERSONNEL	\$953,056	\$2,420		\$955,512
300 - Supplies	11,582	909		12,491
400 - Travel & Entertainment	84	11,270	617	11,971
500 - Info & Communication	673,820	36,104	0	198,157
<i>*Library Crosscharge Account</i>	<i>(4,732)</i>			<i>(4,732)</i>
600 - Outside Services	26,602		0	26,602
700 - Miscellaneous	0	3,193	0	514,960
900 - Equipment	0			
990 - Transfer	0			
TOTAL OPERATING	\$707,356	\$51,476	\$617	\$759,449
TOTAL EXPENDITURES	\$1,660,412	\$53,896	\$617	\$1,714,961

*The Library is authorized to charge expenditures to its operating budget equal to the balance in the Crosscharge (3101000) account.

Raymon H. Mulford Library **Grant Expenditures for Fiscal Year 1999/2000**

	NIH AIDS Information Grant	Outreach To Health Care Professionals Grant	NIH Health Information Network NWO Grant (Year 2)
Beginning Balance	\$32,867	\$23,684	\$68,345
100 - Salaries		2,341	12,782
200 - Fringe Benefits		574	2,224
Payroll Accrual			1,553
TOTAL PERSONNEL		\$2,915	\$16,560
300 - Supplies	4,451		
400 - Travel & Entertainment	892	2,043	1,084
500 - Info & Communication	6,743	187	461
600 - Outside Services	3,550	1,683	20,263
700 - Miscellaneous	0	0	0
900 - Capital Assets	10,299	0	0
		13,893	0
TOTAL DIRECT COSTS	\$25,935	\$20,676	\$38,368
991 - Indirect Cost Recovery	6,932		
TOTAL PROJECT COSTS	\$32,867	\$20,676	\$38,368

Resources & Collections

Print Materials. Book expenditures increased 6.8% to \$64,250 with the largest portion of the budget going toward the purchase of books in the clinical sciences in continued support of the Medical School's problem-based learning curriculum. This year was particularly critical in terms of making needed materials available as over 200 MED1 and MED2 students vied for current, basic clinical resources each week. Not since 1991, has the Library had at it's disposal such a sizeable budget line for print materials.

Electronic Resources. Of particular note is a new resource, *MD Consult*, which includes the full-text of 40 widely-known medical textbooks and 50 journals, including the *Clinics in North America* titles. (See full list in Appendix). Use of this resource became so widespread around campus and popular with clinicians, residents and students that it was often difficult to log-on. Within the first month, the publisher was suggesting an increase in user licenses. We heavily marketed the product when it was first made available, but quickly abandoned future targeted marketing as demand exceeded user licenses.

BOOK & MEDIA PURCHASES, LAST 10 FISCAL YEARS	
FISCAL YEAR	NO. OF ITEMS
1990/91	216
1991/92	822
1992/93	313
1993/94	552
1994/95	402
1995/96	579
1996/97	445
1997/98	588
1998/99	848
1999/00	827
TOTAL	5,592

Overall, electronic resource expenditures more than more than quadrupled to \$28,874, with the addition of two major Web-based resources: ***MD Consult*** and ***OVID's Evidence-Based Medicine*** package, which came with the full-text of about 15 core medical titles as well as the EBM database.

BOOK & MEDIA EXPENDITURES, LAST TWO FISCAL YEARS			
	FY 1998/99	FY 1999/00	% Change
Books	\$60,173	\$64,250	+6.8%
Audiovisuals	\$2,733	\$1,025	62.5%
Electronic Resources *	\$6,058	\$28,874	+376.6%
TOTALS	\$68,964	\$94,149	+36.5%

The addition of *MD Consult* increased the total number of full-text electronic books owned by the Library to 84. The 10 licenses used to access the electronic version of Harrison's continued to be heavily used by students.

Cataloging-Organizing Resources for Access. The organization of information resources for the easy access of library users is generally taken for granted by users. However this year, the cataloging process must step into the spotlight for a variety of reasons. As the Library moved forward with its plans to establish a Health Information Network (HIN) for Northwest Ohio under the auspices of an NLM grant, cataloging became the very soul of the project because the accuracy and consistency of the organization of the materials network- wide would certainly impact other services offered through the HIN. (To read more about the HIN project see page 11.)

- ❑ **The good news** is that by creating a merged database the Library *added* about 7,000 *unique* records to the existing catalog for local use of MCO faculty, staff and students including many unique serial titles not held by the Mulford Library.

To achieve this great benefit much hard work took place-

- ❑ Assumption of ongoing cataloging responsibilities for four HIN libraries (St. Vincent's, Mercy College, Flower and Toledo Hospitals) and retrospective cataloging necessitated by database merge resulted in a 100% increase in overall cataloging volume for the fiscal year.
- ❑ Merged catalog and creation of branch libraries resulted in major revision of established catalog workflow and implementation of more advanced system features.
- ❑ Full-time support staff devoted most of their non-routine work time to a variety of large-scale clean-up and enhancement projects related to database merge, including review of about 10,000 records to check branch location information and creation of several hundred journal holdings records for incoming branches.

Journals

While the number of print journal titles in the collection held at 900, expenditures for the journal collection increased by 11.3% to \$548,925.

ELECTRONIC SUBSCRIPTIONS, FY 1999/00		
	Total	% of Total
MCO	257	18.6%
Print Duplicates	246	17.8%
Unique	11	0.8%
OhioLINK	1,124	81.4%
Print Duplicates	362	26.2
Unique	762	55.2
Total Print Duplicates	607	44.0%
Total Unique	773	56.0%
TOTAL TITLES	1,381	

Over the past 10 fiscal years journal expenditures have increased by 19.6% but the number of current titles in the health and life sciences -- including all OhioLINK Electronic Journal Center titles -- has decreased by 14.1%

The total number of current electronic titles (unique plus print duplicates) increased 71.4% from 805 to 1,381, with 44.0% of the total representing print duplicates.

Online subscriptions to all 10 of the American Society of Microbiology's titles (cost: \$4,286) were added.

- The number of unique electronic titles (i.e., not print duplicates) increased 43.4% to 773, mainly due to additions of Springer Verlag and Karger publications to the OhioLINK Electronic Journal Center. OhioLINK electronic titles now make up 45.3% of our current total subscriptions.
- Currently the OhioLINK Electronic Journal Center currently contains 3196 journal titles with 1,794,137 journal articles. In the past year, MCO users downloaded 20,404 articles this year, compared with 8,202 articles in the previous year. The top five most frequently downloaded were Occupational Health and Industrial Medicine (356), Brain Research (314), Social Science and Medicine (225), Neuroscience (218) and Preventive Medicine (216).
- Despite ongoing concern and efforts to secure electronic titles for nursing and the allied health disciplines, those fields have been slower to move to electronic access than others. Of note, is OhioLINK's commitment to work toward multiple vendor agreements to secure an electronic nursing journal package.
- For the past three years, the Library has monitored the daily usage of individual journal titles within the Library. The data gathered by this study provided strong indicators of individual titles' immediate usefulness to our MCO community. This year, the Journal Usage Study was abandoned due to staff shortages.

Collection Use

For the fourth consecutive year we have seen a decrease in items being checked out. The exact cause is unknown but contributing factors may include the age of our monographic collection and an increasing preference for information available through electronic sources such as MDConsult and the Electronic Library of Medicine.

Items Circulated FY1999-2000

Material Type			
Monographs	48.4%		6,708
Serials	0.2%		33
AV	2.7%		369
Reserve	22.3%		3,084
Supplemental Electronic Material	3.3%		452
Local AV	0.7%		102
OhioLINK Books	22.0%		3,053
OhioLINK Media	0.4%		51
OhioLINK Microforms	0.0%		3
Total	100.0%		13,855

Items pcirced from OhioLINK libraries now comprise 25% of the Library's total circulation.

Technology

Staff and Public Workstations Support

- ❑ In anticipation of future public workstation expansion needs, network drops were added to sixteen locations in the Library.
- ❑ Hardware locks installed on ALL public PCs greatly reducing station downtime, patron misuse, and erroneous configuration. Additionally, a 'master' image of all public PCs was created and stored on the Library's NT server, automating the process of restoring the 'master' image to any Library public workstation upon bootup. We estimate that this frees the Digital Services Librarian at least 10 hours weekly for more challenging projects.
- ❑ New PCs were installed at the Reference Desk, in the Online Resources Room and in Interlibrary Services.
- ❑ A color printer was installed at the Reference Desk to support user requests for color copies of Web-based materials.
- ❑ With the retirement of CCI Assistant Director Paul Scheuer in October, 1999, the Library's Digital Services Librarian took a major role in the operation of the WINFRAME server which provides campus and AHEC access to CD-ROM.

Y2K?? Ha!

At the end of FY1999, the Library installed an new Alpha Server for the OSLER catalog and moved to a turnkey status with Innovative Interfaces Inc. (III) , thereby relieving Information Systems of any Y2K concerns with the Library systems. Likewise, since the Library depends on OhioLINK and OARNET for access to databases and other resources, our active role in any potential Y2K bugs was small from the standpoint of user access. We were lucky!

However, there were some fixes for which we had full responsibility in the Fall, 1999. These were:

- ❑ Set-up/configuration of the Lanatronix server used to export OCLC records for the OSLER database
- ❑ Upgrade OSLER to Innopac Release 12B in November, 1999, followed by an upgrade to Release 2000B in June 2000.
- ❑ Internally a Y2K software inventory was taken. QuickBooks was upgraded. Ariel (electronic document delivery software) was modified for compatibility and Windows95 and Office 97 Y2K patches were installed.

Library Services

Access, assistance and education continue to be hallmarks of the Library's service focus. One of the Library's greatest challenges continues to be supporting students and faculty who have information questions-but are accessing resources remotely.

Special Support for Students:

- ❑ **Reference Desk assistance was extended** until 10P.M. two nights weekly (Tuesdays and Wednesdays) to better serve students in the Problem-Based Learning sessions. Previously the Desk had closed at 7 P.M. on those evenings. Students gained access to professional assistance six additional hours weekly.
- ❑ **Point of use teaching** (characterized by one-one education on a particular source, system or database) activities through the Reference Desk **increased by 55%** over the previous year. Likewise, questions requiring longer than 10 minutes to answer (research questions) and the use of multiple reference resources rose by 14% over the previous year. We're pleased our users are challenging our information expertise!
- ❑ **Complimentary Printing Services** in the Online Resources Room (ORR) continued to be improved with the addition of a third laser printer. Over **300,000 pages** were produced by users. September-November showed the highest use. Total cost to the Library for providing this service for the year was \$6350.
- ❑ **Three additional, Web accessible pc's** were added to the Fifth Floor to provide more access for students. Noting that the fifth floor has traditionally been a reading room/study area, printers were not added in order to maintain that atmosphere.
- ❑ **"Mulford Library Electronic Journals" Web page created.** Recognizing that most users want quick access to an alphabetical journal list as the principal means for locating the Library's holdings, the Bibliographic Control Department created a merged title list (MCO and OhioLINK titles). Clicking on the title leads the user from the title directly to the full-text resource.
- ❑ **A FAQ page** was added to the Library Website to assist students to independently find answers for commonly asked questions about the Library, its resources and services.

Supporting Campus-Wide Needs:

- ❑ Library Users are now able to renew their own materials online through the OSLER system any day of the week, any hour of the day.
- ❑ A help guide for creating the equivalent of a *Current Contents* search in *Science Citation Index Expanded* was distributed to users.
- ❑ In February, 2000 when MCO's Pediatrics Department moved to the campus of St. Vincent's-Mercy Medical Center, Scott Lapinski worked closely with the department and Information Systems groups at MCO and St. Vincent's to ensure that our faculty, staff and students had ongoing access to Mulford Library and OhioLINK resources. Part of the project involved local registration of over 160 department members, including residents.
- ❑ Users, especially residents and faculty, frequently ask for a list of our journal holdings by subject area. We also added a "**Subject Guide to Current Journals**" to the Library's Web site. It lists both print and electronic titles in the collection.
- ❑ **Supporting the Needs of Biomedical Authors World-Wide.** "Instructions to Authors," a web-site maintained by Head of Bibliographic Control, Sheryl Stevens, was named a Key Resource among Health Sciences Libraries, **ranking seventh** among over 50 sites selected by Links2Go. The National library of Medicine and Johns Hopkins Medical School Library were among those ranked higher. The Instructions to Authors page **receives 60% of the traffic** recorded on the Library's Web pages.
- ❑ **Email & Marketing.** A greater emphasis was placed on marketing new products to the MCO Community during FY2000. Email was used for its cost and time efficiency, and ability to meet both broad and targeted groups as desired. An interesting outcome of using email as a marketing vehicle is that it frequently generated follow-up questions from the MCO community on related topics which staff were always pleased to elaborate on.

...and don't forget OhioLINK!

Link to Holdings/Fulltext. This year OhioLINK added two features to several database resources. The first button, Link to Holdings, enabled the user looking at a citation to immediately see if a local OhioLINK affiliated Library held the journal in which that citation appeared. The second, Fulltext button, immediately takes the user from an individual citation to the full-text of the article if it is one of the over 2700 journal titles in the OhioLINK Electronic Journal Center.

Non-Book Borrowing. Circulation of audiovisual materials, including videocassettes and software was added to the OhioLINK's service agreement among schools.

The Cost of Resources provided by OhioLINK. OhioLINK Director, Tom Sanville, provided an estimated cost to Ohio University & College Library Directors depicting the *true value* of OhioLINK consortial resources to each Library. Without OhioLINK, the Mulford Library would have to pay \$650,000 for the same pool of resources we currently have available, nearly double the 1999/00 Library Operations budget. The cost we pay OhioLink is approximately \$52,000.

- ❑ **Reference Evaluation, NCA Survey and Information Management Committee Survey.** One cornerstone of *great* service is getting feedback from those who use library resources and services. This year, the Mulford Library had an opportunity to participate in three surveys:
 - **The Reference Survey** was distributed to users approaching the Reference Desk for assistance. It requested feedback on the quality of the service interaction, and the quality/appropriateness of the information the librarian provided. Analysis is being provided by an outside company.
 - **The Academic Resources Survey** was developed by the NCA Criterion 2 subcommittee chaired by Dr. Edgar Staren. Outcomes from the survey included:
 - ❑ Library hours, databases offered, and interlibrary loan services were each ranked as adequate by 98% of the respondents.
 - ❑ Lower adequacy rankings were given the book and journal collections and photocopiers.
 - **The Information Management Committee Survey** was completed in August, 1999 as a part of preparation for the Joint Commission's Fall, 1999 visit. Highlights from that survey include:
 - ❑ Respondents rated two areas, document delivery and knowledgeable reference assistance, as Most Used and Most Valuable.
 - ❑ Marketing resources, services and consumer health support were noted as areas needing expansion and visibility.
 - ❑ Suggestions for improvement that ranked highest were aspects regarding the physical plant and the book collection.
- ❑ **Participation.** Utilizing years of experience and observation of users accessing information and using technology, the Library was pleased to be actively involved in the development of a Campus-Wide Computer Policy, the Campus Email Policy and the selection of a citation management software that would be compatible with the many resources MCO faculty and students use.

TRENDS AT A GLANCE	FY99/00	FY98/99	FY9596	1 YR. Trend	5 YR. Trend
Gate Count	138,634	157,838	226,273	-12%	-38%
Items Circulated (internal)	13,855	17,148	21,422	-19%	-35%
Items Borrowed-OhioLINK	3,107	2,869	2,110	+7%	+32%
Items Loaned to OhioLINK	1,259	1,747	870	-27%	+30%
Book collection	36,566	36,486	32,508	+.2%	+12%
Current Jnl. Subscriptions	1,681	1,435	1,055	+17%	+59%
Electronic Resources	88	53	0	+66%	+100%
Research Questions	519	552	871	-5%	-40%
Resource Usage Questions	869	561	693	+54%	+25%

Education

The educational services of the R. H. Mulford Library expanded over the past year. The traditional orientation tours for new students and library-sponsored database training sessions continued, with considerable time and effort spent developing new educational initiatives. Of note, was Jolene Miller's attendance at the *Ohio Information Literacy Immersion* held at Kent State University, June 16-21, 2000. This week-long intensive training(seminar?) was sponsored by OhioLINK and the Association of Research Libraries.

Philosophy and skills derived from this training will *reshape* the Library's traditional educational services which have focused on resource specific training.

In moving toward information literacy as the philosophic cornerstone of our programs, the Library is better able to train students and professionals to be life-long learners in accordance with the principles of the American Association of Medical Colleges.

Training Students:

- ❑ 400 incoming students participated in Library orientations sessions.
- ❑ Five courses integrated information skills training:
 - MED1: *Pathophysiology Problem Based Learning*
 - MED2: *Pathophysiology Problem-Based Learning*
 - NUR301: *Introduction to Nursing Agency*
 - OCCH 602: *Environmental and Occupational Health Research Methods*
 - PT410: *Scientific Inquiry in Physical Therapy*
- ❑ In the Managed Care College, the Library supported sessions on resources for evidence-based practice.
- ❑ Library Faculty taught three sessions of the Personal Information Management Elective to MED4 and Physician Assistant students.

Information literacy takes a broader view of the information skills to be acquired and includes:

- identifying an information need
- finding appropriate information efficiently
- evaluating information for authoritativeness, timeliness and
- managing information electronically
- and using information ethically and appropriately
- course-integrated activities to reinforce skills and concepts.

MED4 Student Comments from Personal Information Management Elective:

"The two most valuable aspects of this class were learning how to find resources efficiently and how to use PowerPoint for future residency presentations."

"I wish I would have had the ability to have taken this elective during my first or second year so I could have used the skills I learned."

- ❑ Over 60 faculty and 147 staff in academic and clinical departments were trained including anatomy, Pathology and Biochemistry and Marketing.
- ❑ A new seminar, "Evaluating Information on the Web" was offered. It likened the Web to a flea market where searchers could come across "great finds mixed in with a bunch of junk," and provided useful tools to assess the quality of a Web site.

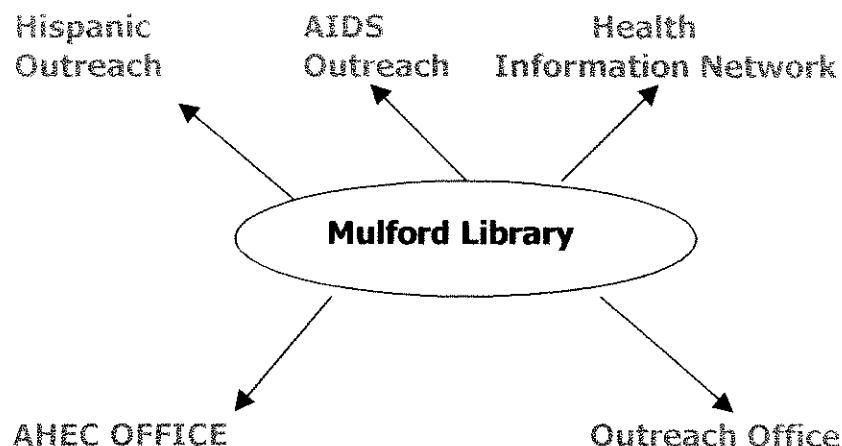
Training Providers of Patient Care:

- ❑ Clinical faculty and staff in Nursing Services, Psychiatry, Otolaryngology, Pediatrics, Transplant Services and Family Medicine were trained.
- ❑ Through the Library's association with AHEC and our grant projects over 100 health professionals in Northwest Ohio received information training.

Overall, in 1999-2000, the Library trained over 1940 participants in 160 contact hours.

Outreach Services & Grants

Through collaboration with five groups, the Mulford Library continues to strive to improve information access for healthcare providers throughout Northwest Ohio. The Health Information Network was a major undertaking and provided financial support to move Jonathan Hartmann to a full-time Outreach Librarian position. Hartmann also became actively involved in activities supported by the AHEC Office and the Outreach Office.



Grants

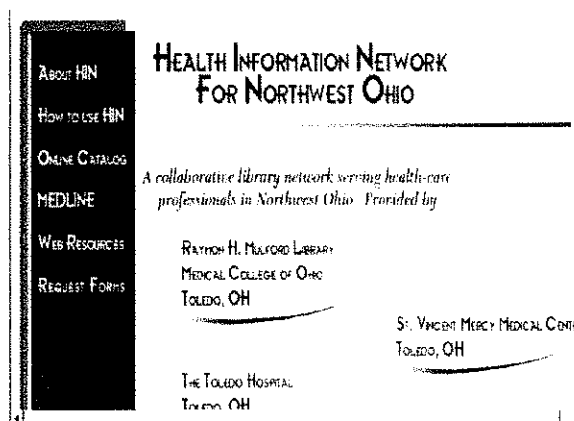
Health Information Network for Northwest Ohio (HIN): The HIN is a consortium of local health sciences libraries, lead by the Mulford Library, to provide extended outreach and information services to Northwest Ohio. Before a network could be marketed, the resources of the four partner libraries, St. Vincent's, Mercy College, Flower and the Toledo Hospital had to be electronically merged with those of the Mulford Library. Although it seems as if technology should make this a straightforward process, getting the groundwork in place for the core of the network required the extraordinary efforts, talent and creativity of three library departments:

- **Bibliographic Control Participation.** Planning and implementing the consolidated catalog portion of this project consumed a large portion the Bibliographic Control Department's time and resources. **All** staff members were directly involved and each individual's work volume and work flow was affected in some way.

By the end of the fiscal year, the following steps had been successfully completed:

- Part-time support staff member hired and trained (July 1999)
 - Retrospective cataloging records for each of the four incoming libraries collected from various sources and submitted to database-processing vendor along with specification profiles for each set of records (August-October 1999)
 - Merged database (and subsequent "gap" records) loaded after resolution of numerous technical problems (January-March 2000)
 - Assumed ongoing cataloging responsibilities for branch libraries (January 2000)
 - Branch libraries' collections bar-coded (February-June 2000)
 - New serials check-in units set up for incoming branch libraries (March 2000)
 - Branch libraries trained to use serials checkin units (April-June 2000)
 - Full-time support staff assisted with cleanup and enhancement of merged database (March-June 2000)
 - Began training support staff at branch libraries to handle barcoding and processing of newly cataloged materials (June 2000)
-
- **Digital Services Participation.** The Digital Services Librarian provided the technical systems support for the project including:
 - creating load tables and monitoring and troubleshooting the tape load of the holdings of all four libraries
 - loading authority file tapes with Library of Congress names and subject headings as well as NLM MeSH subject headings
 - configuring parameters in subsystem modules (Online Catalog, Circulation, Serials and Patron) for staff at the four sites, establishing enhanced Password/Authentication setup
 - loading Telnet software
 - conferring with information systems personnel at each site as well as at MCO
 - installing printers and barcode readers.

Marketing Services. The network Web site (*pictured at right*) was designed and a brochure publicizing the network was created. Jonathan Hartmann distributes brochures on site visits to public health departments, hospitals and clinics throughout Northwest Ohio. The website enables healthcare professionals to access resources and order materials through web-based interfaces.

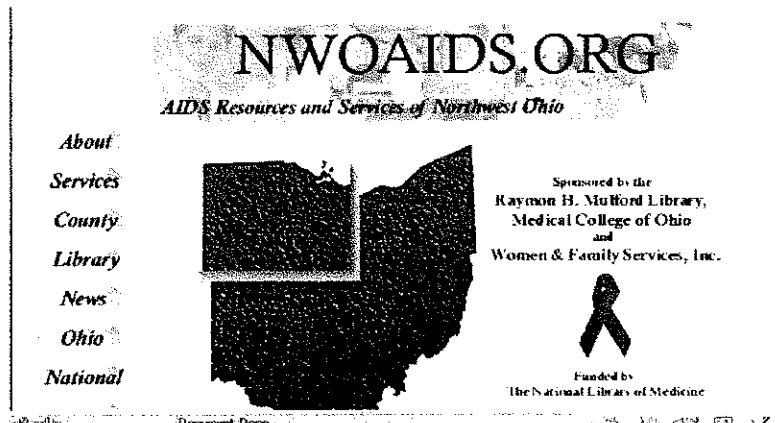


Hispanic Outreach Grant:

This one year grant supplied personal computers to healthcare professionals at clinics serving the Hispanic community, including migrant workers in Lucas, Sandusky and Huron counties. Educational sessions emphasizing the NLM's PubMed and Lonesome Doc products were scheduled. Healthcare professionals were offered NLM subsidized interlibrary loans for the course of the grant which ended in August, 2000. Members of a Fremont, Ohio Clinic presented the Library with a plaque, reading: "To the Raymon H. Mulford Library, In grateful appreciation for their contribution to community health services."

AIDS Grant:

NWOAIDS.ORG is a network for providing HIV/AIDS information to healthcare professionals, patients and consumers in Northwest Ohio. It identifies agencies and organizations that provide HIV/AIDS services, such as testing, counseling and other types of support in fifteen counties. The website also provides links to other prominent national resources.



- ❑ **Web site.** The network Web site, **nwoaids.org** (*pictured above*) received an average of 111 hits per day.
- ❑ **Equipment.** A computer was installed at Women & Family Services in Napoleon.

- ❑ **Counties added.** Lucas, Wood, and Ottawa counties were added to the network.
- ❑ **Site Visits.** Jonathan Hartmann continued to visit the network partner sites. On these visits, he trained site staff in the use of Mulford Library and Internet computerized HIV/AIDS information resources.
- ❑ **Promotion.** Cards promoting the AIDS network were created and distributed to each partner site.

AHEC

- ❑ **MedReach.** Several improvements were made to the MedReach system:
 - **Improved Access.** Over 70 AHEC preceptors received new passwords to access OhioLINK databases directly, providing improved functionality.
 - **MD Consult.** Over 70 AHEC preceptors were also given passwords to allow them to access MD Consult from any location. This separate MDConsult subscription was paid for by AHEC.
 - **Multimedia.** Jonathan Hartmann added a multimedia section to the AHEC Web site.
- ❑ **New Sites.** Computers were installed at new sites in Bowling Green and Wauseon. Jonathan Hartmann trained site staff and area physicians in the use of MedReach at these sites. There are now ten computers installed at AHEC hospital sites throughout Northwest Ohio.
- ❑ **Students.** A computer at the AHEC student housing site in Sandusky. There are now five computers located at four AHEC student housing sites in Northwest Ohio.
- ❑ **Visits.** Traveling over 3000 miles this year, Hartmann made quarterly visits to AHEC and AIDS sites in Bryan, Lima, and Sandusky.
- ❑ **Tutorials.** Jonathan Hartmann continued to serve as the primary educator in the five week AHEC sponsored "Medical Applications of Computers" tutorials for rural physicians. Tutorials were held in Napoleon and Bowling Green. Over twenty physicians were trained to use computers for medical applications in these tutorials.
- ❑ **Presentations.** Jonathan Hartmann presented two papers at the National AHEC Workshop in Louisville, KY.

Personnel

- ❑ **Staffing.** During this fiscal year, the Library lost two positions in the Access Services department to attrition during an MCO-wide retrenchment. The duties from the Interlibrary Loan Supervisor position had to be split between the Access Services Manager and the Night/Weekend Supervisor. The part-time Circulation Assistant position was covered by existing staff in the department. The latter became particularly "tricky" when we were asked to hold all staff to their weekly budgeted number of hours. Many part-timers had been working as high as 35 hours weekly to cover the lost position. Accomplishing this task with an existing 20 hour personnel shortage, and the need to meet 110 service hours per week and maintain extended exam hours proved to be a Herculean task. Impacts were acutely felt in shelving turnaround, and the abandonment of the annual Journal Usage Study, which has helped us in the past to accurately determine which low use titles to cancel.
- ❑ **2000 Medical Library Association, Cunningham Fellow.** For a week in March, the Mulford Library hosted Elena Leonova, an MLA Cunningham Fellow. Ms. Leonova is a librarian from the Cardiology Research Complex in Moscow, Russian Federation. In addition to what we learned about library practice in Russia, Ms. Leonova also provided staff with a overview of the work at the health science center where she works and of Russian life. She was charming!
- ❑ **Janice Flahiff joins staff.** A part-time reference librarian was added to the Information Services staff with funding from the Health Information Network grant to cover the former responsibilities of Jonathan Hartmann who moved to a full-time outreach position. Having worked at MCO previously as a laboratory assistant, Ms. Flahiff brought to the position knowledge of the organization and a many years' experience from both the academic and public library arena.
- ❑ **PBL.** In addition to the Informatics training provided to MED1 and MED2 students, two library faculty, David Boilard and Jolene Miller, participated as PBL facilitators in the School of Medicine. Each facilitated two 10 week sessions.

Research, Publications and Presentations.

- ❑ **Sheryl Stevens**, Head of Bibliographic Control presented, "The Technical Services Challenges of Managing Electronic Journals," at the Annual Meeting of Midwest Chapter of MLA, in Grand Rapids, Michigan. Early in 2000, Ms. Stevens published, "Mapping the Literature of Cytotechnology," Bulletin of the Medical Library Association, 88(2):172-177 which is an extensive study to determine the three frequently used journals in cytotechnology.

Research, Publications... continued

- ❑ **Scott Lapinski**, Digital Services Librarian participated in a Panel Presentation at the 1999 American Society of Information Science Conference. His paper, entitled, "The Inappropriate"; Policies and Politics of Unrestricted Web Access." Examined the ethical concerns of Wide Open Web access in library public computing areas. Using statistics on thousands of transactions on the Library's public terminals, Mr. Lapinski demonstrated that only a fraction of a percentage *might be* use one might deem "inappropriate " in an academic setting.
- ❑ **Jolene Miller**, Education Librarian, won the 2000 MLA Research Development Demonstration Project Grant to support her work which analyzes the administration of for-credit library electives in medical schools.
- ❑ **David Boilard**, Library Director, presented his paper, "Engineering Multi-faceted Academic-Hospital Collaboration in an Institutionally Competitive Environment " at the Annual Meeting of the Medical Library Association in Vancouver, British Columbia.

Our Challenges in 2001

- Redesign services to meet the evolving needs of students and faculty both on and off-campus, remote clientele and distance learners.
- Continue the evolution of the Library's collection by crafting an effective mix of print and electronic resources that are tailored to support education, research and patient care needs of the MCO community.
- Refine the Library homepage so that it is intuitive to all resource users providing access to both resources as well as basic instruction and assistance.
- Refine the Library's Health Information Network for rapid access, personal assistance, training and technical support and promote it to health professionals in Northwest Ohio.
- Champion the increased involvement of library professional staff on institutional planning and implementation committees and task forces and as course facilitators and instructors.

Statistics

1999-2000

COLLECTION SIZE AS OF JUNE 30, 2000	
PRINT BOOKS	36,566
ELECTRONIC BOOKS	84
OTHER ELECTRONIC RESOURCES *	4
AUDIOVISUALS	259
JOURNALS	
Total Current Titles	1,707
Total Titles	5,454
Total Print Volumes	112,378
TOTAL VOLUMES	149,291

* Excludes electronic journals

COLLECTION MAINTENANCE COSTS				
	FY 1998/99 TOTALS	FY 1999/00 TOTALS	FY 1998/99 AVERAGES	FY 1999/00 AVERAGES
Books	\$60,173	\$64,250	\$72.41	\$79.51
Audiovisuals	\$2,733	\$1,025	\$273.30	\$146.43
Electronic Resources *	\$6,058	\$28,874	\$865.43	\$2,406.17
Journal Subscriptions	\$493,423	\$548,925	\$350.44	326.54
Binding	\$10,709	\$11,719	\$6.58	\$7.06
Cataloging	\$4,616	\$5,092		
TOTALS	\$577,712	\$659,885		

* Excludes electronic journals

**BOOK & NON-PRINT
PURCHASES,
LAST 10 FISCAL YEARS**

FISCAL YEAR	NO. OF ITEMS
1990/91	216
1991/92	822
1991/93	313
1993/94	552
1994/95	402
1995/96	579
1996/97	445
1997/98	588
1998/99	848
1999/00	827
TOTAL	5,592

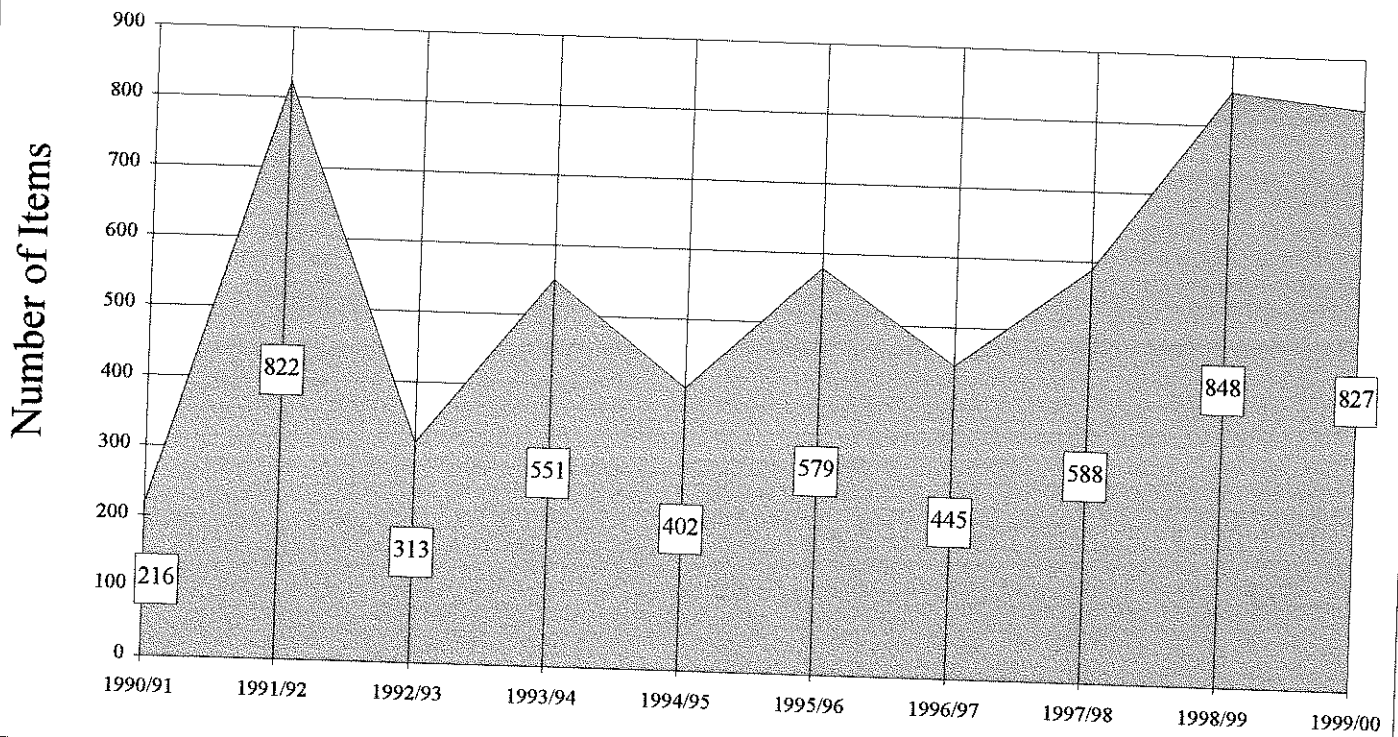
**COST & NUMBER OF JOURNAL SUBSCRIPTIONS,
LAST TWO FISCAL YEARS**

	FY 1998/99	FY 1999/00	% Change
EXPENDITURES	\$493,423	\$548,925	+11.3%
NUMBER OF TITLES *	1,435	1,707	+19.2%
Paid	1,408	1,681	+19.4%
Free	27	26	-3.7%
Print	896	908	+1.34%
Electronic (unique)	539	773	+43.4%
Electronic (print duplicates)	259	607	+134.7%
Added *	51	287	+462.7%
Cancelled	11	6	-45.5%
No Longer Published	4	2	-50.0%

* Excludes print duplicates

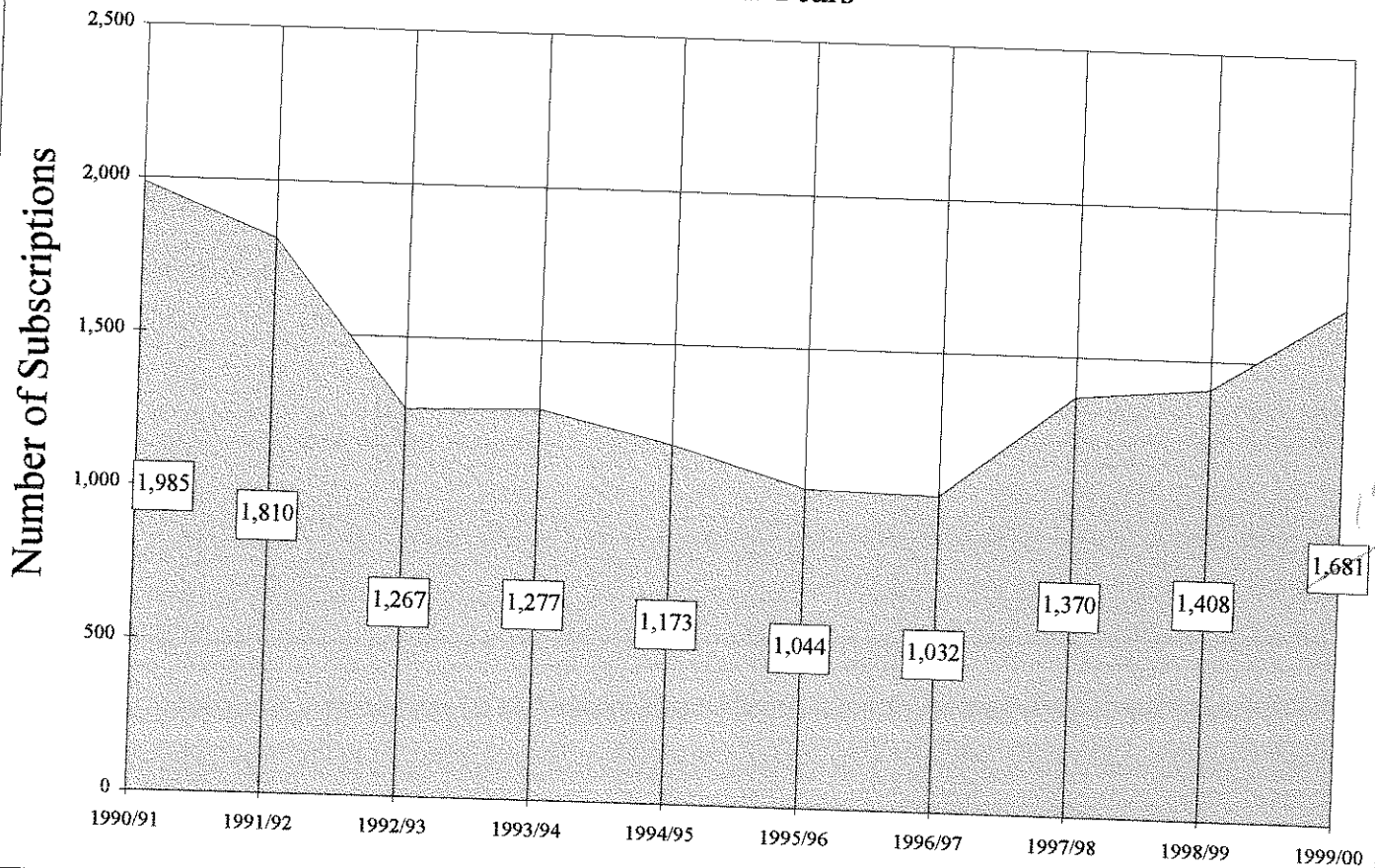
Books & Non-Print Acquisitions

Last 10 Fiscal Years



Paid Journal Subscriptions

Last 10 Fiscal Years



28
1825

PAID SUBSCRIPTIONS, FY 1999/00		
	Total	% of Total
MCO	919	54.7%
Print	908	
Electronic *	11	
OhioLINK Electronic *	762	45.3%
TOTALS	1,681	100.0 %

* not print duplicates

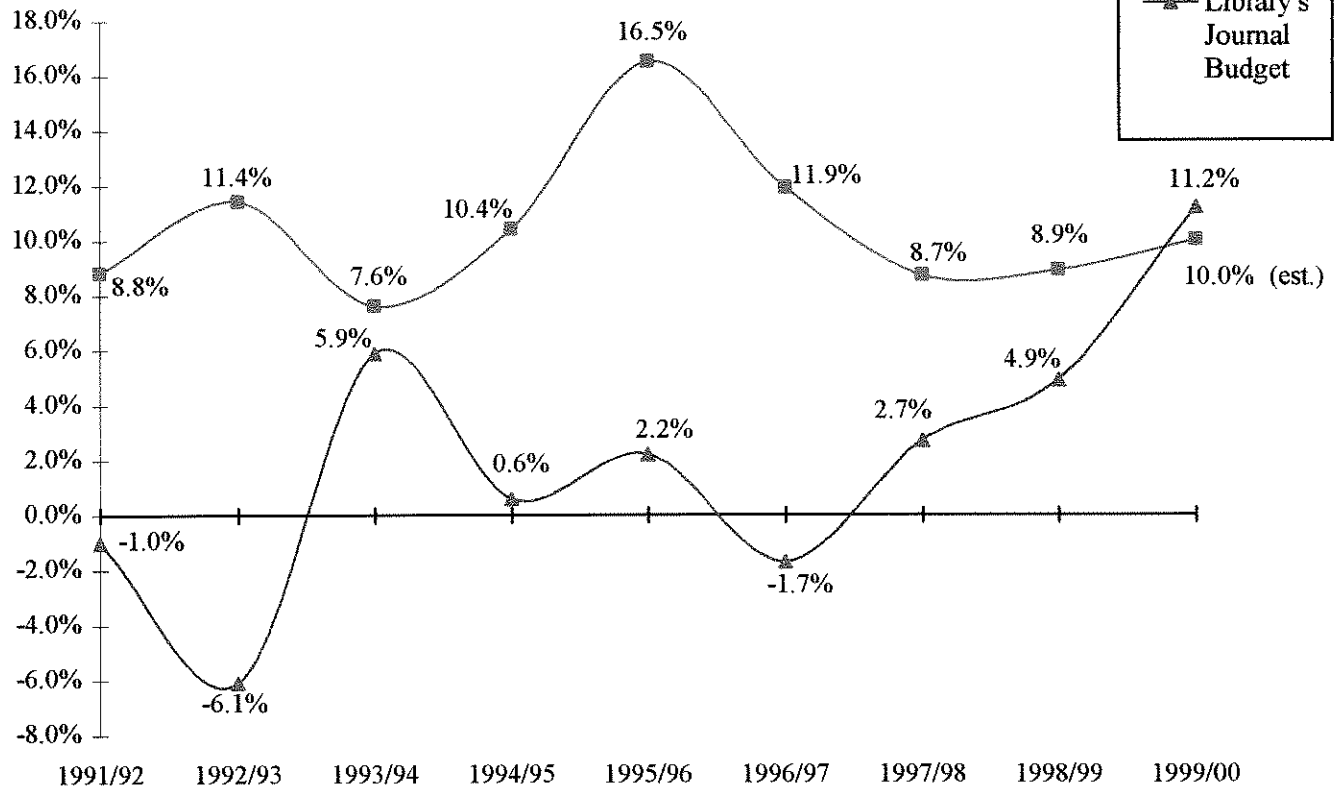
ELECTRONIC SUBSCRIPTIONS, FY 1999/00		
	Total	% of Total
MCO	257	18.6%
Print Duplicates	246	17.8%
Unique	11	0.8%
OhioLINK	1,124	81.4%
Print Duplicates	362	26.2
Unique	762	55.2
Total Print Duplicates	607	44.0%
Total Unique	773	56.0%
TOTAL TITLES	1,381	

JOURNAL SUBSCRIPTION EXPENDITURES, LAST 10 FISCAL YEARS		
FISCAL YEAR	AMOUNT SPENT	% CHANGE
1990/91	\$458,839	+ 12.4 %
1991/92	\$454,381	- 1.0 %
1991/93	\$426,852	- 6.1 %
1993/94	\$452,101	+ 5.9 %
1994/95	\$454,937	+ 0.6 %
1995/96	\$464,921	+ 2.2 %
1996/97	\$457,466	- 1.7 %
1997/98	\$470,197	+ 2.7 %
1998/99	\$493,423	+ 4.9 %
1999/00	\$548,925	+11.2%
NET CHANGE	\$90,086	19.6%

NUMBER OF PAID JOURNAL SUBSCRIPTIONS, LAST 10 FISCAL YEARS		
FISCAL YEAR	NO. OF TITLES	% CHANGE
1990/91	1,958	+9.6%
1991/92	1,810	-7.6%
1991/93	1,258	-30.5%
1993/94	1,277	+1.5%
1994/95	1,173	-8.1%
1995/96	1,044	-11.0%
1996/97	1,032	-2.0%
1997/98	1,370	+32.8%
1998/99	<i>oh</i> 1,408	+2.8%
1999/00	<i>1847</i> 1,681	+19.4%
NET CHANGE	-277	-14.1%

Journal Budget vs Inflation

Last 9 Fiscal Years



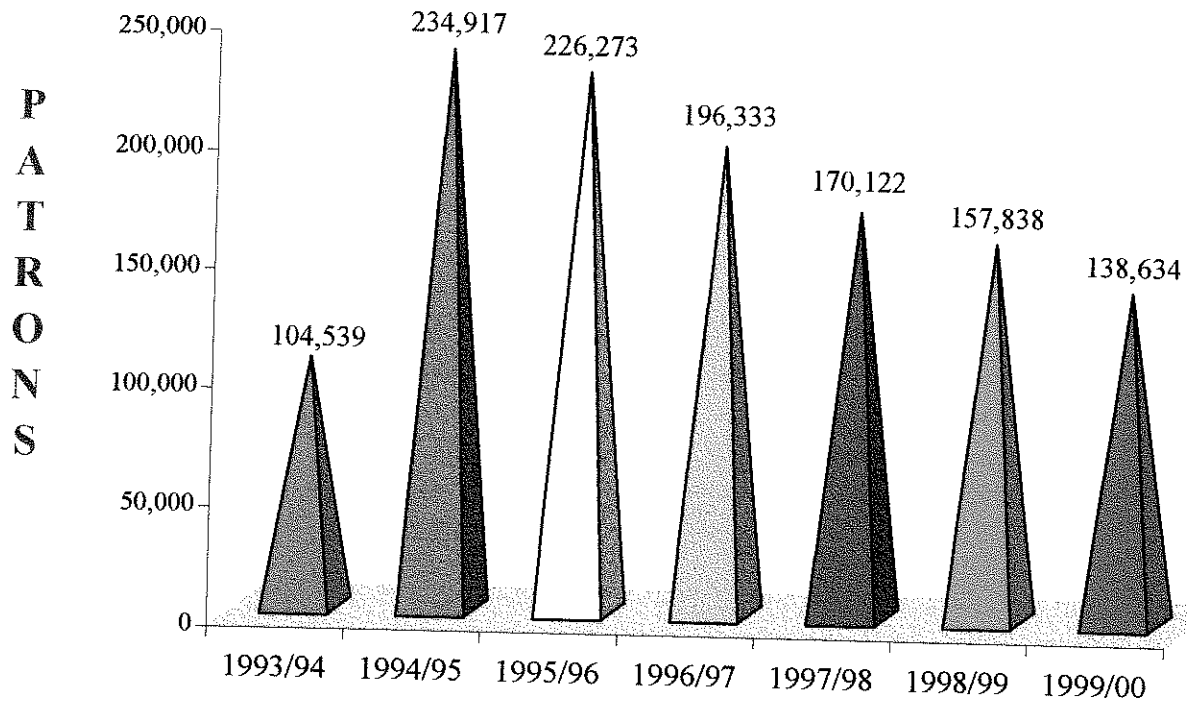
Journal Budget vs Inflation

Last 9 Fiscal Years

	1991/92	1992/93	1993/94	1994/95	1995/96	1996/97	1997/98	1998/99	1999/00
% Change - Average Cost per Title	8.8%	11.4%	7.6%	10.4%	16.5%	11.9%	8.7%	8.9%	10.0% (est.)
% Change - Library's Journal Budget	-1.0%	-6.1%	5.9%	0.6%	2.2%	-1.7%	2.7%	4.9%	11.2%

Library Entrance Count

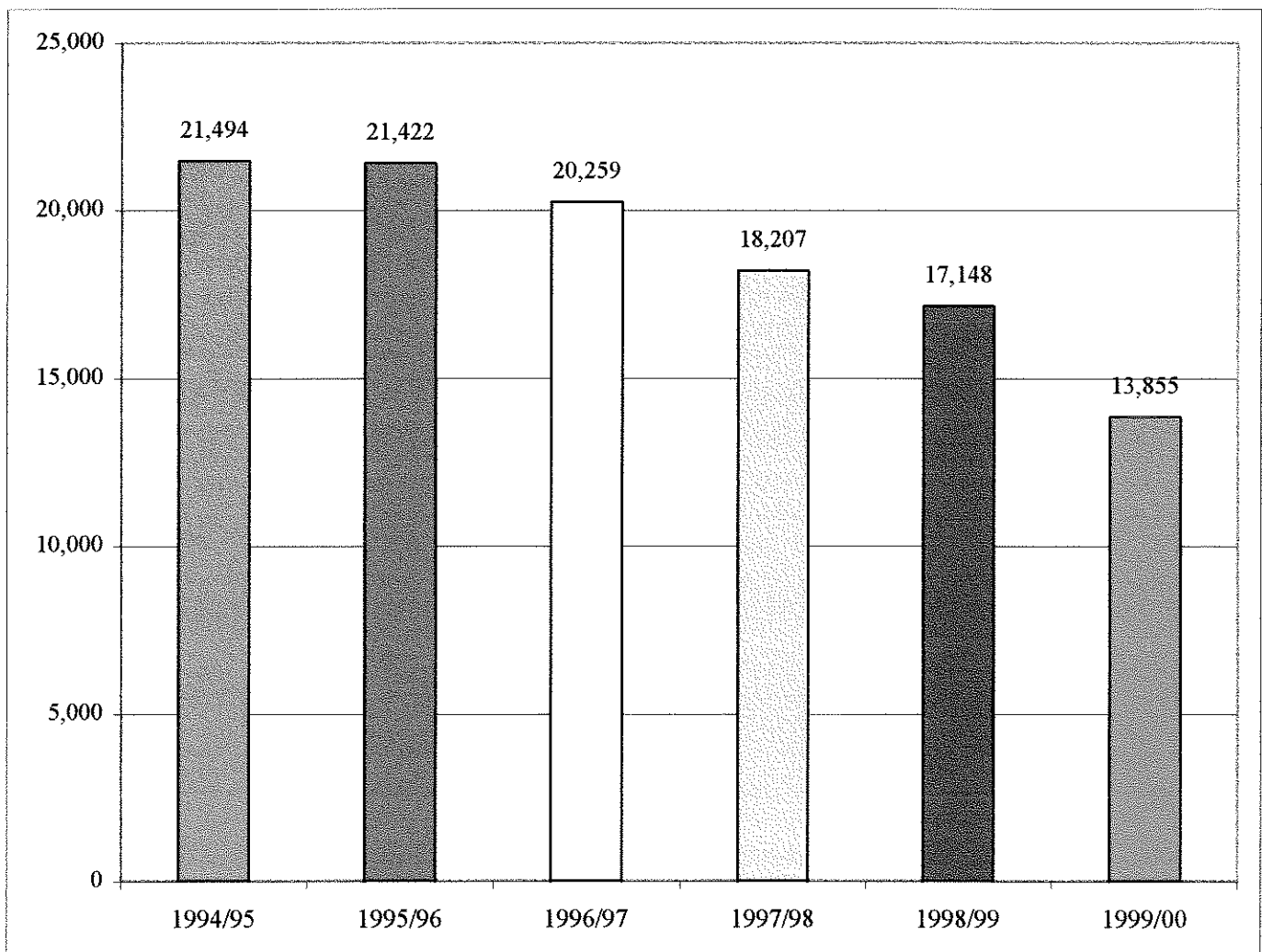
Fiscal Year - 1999/2000



1993/94	1994/95	1995/96	1996/97	1997/98	1998/99	1999/00
104,539	234,917	226,273	196,333	170,122	157,838	138,634

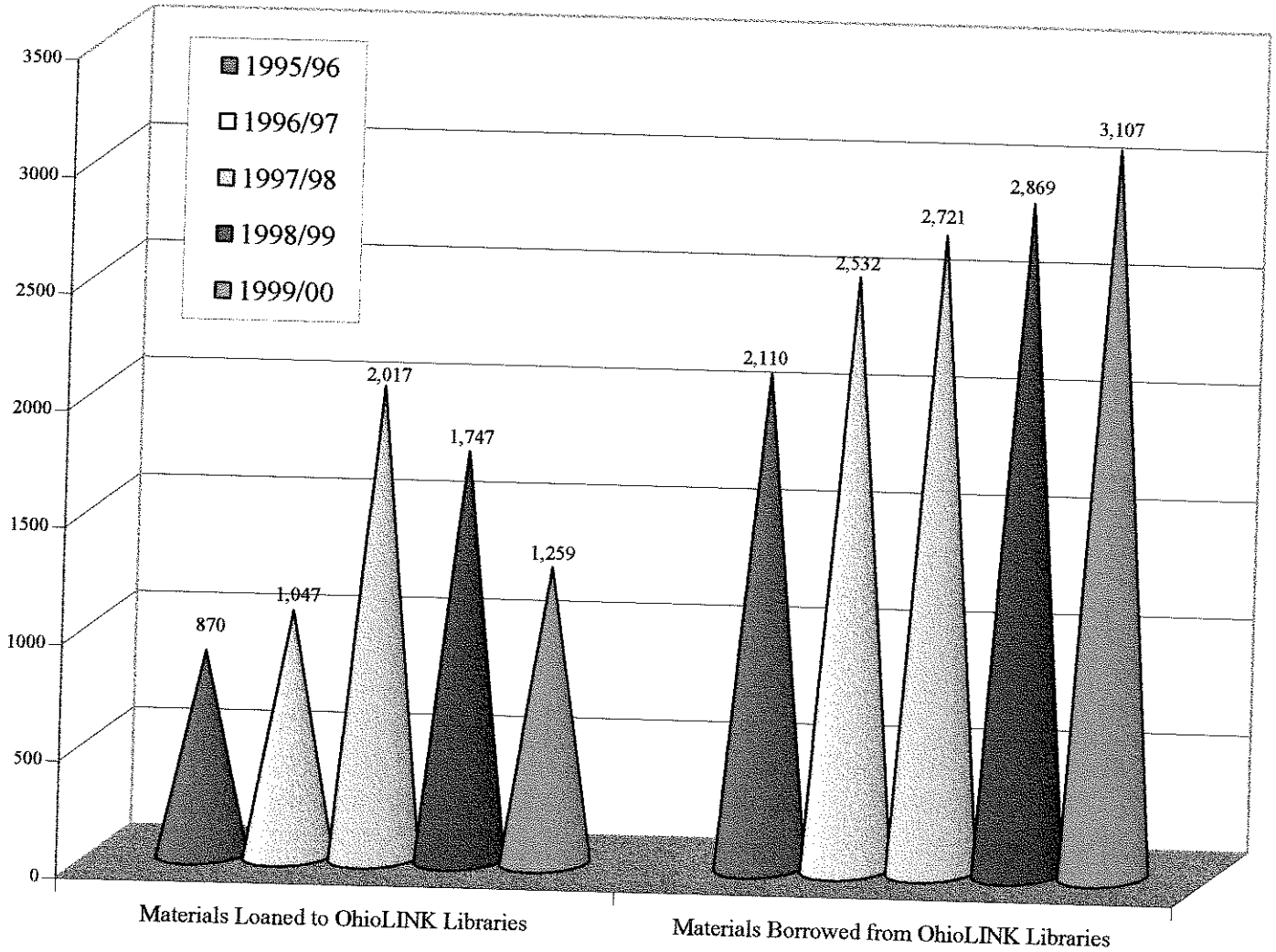
Items Circulated - FY 1999/2000

Material Type				
Monographs		48.4%		6,708
Serials		0.2%		33
AV		2.7%		369
Reserve		22.3%		3,084
Supplemental Electronic Material		3.3%		452
Local AV		0.7%		102
OhioLINK Books		22.0%		3,053
OhioLINK Media		0.4%		51
OhioLINK Microforms		0.0%		3
Total		100.0%		13,855



Patron Initiated Circulation

FY 1999/2000



	1995/96		1996/97		1997/98		1998/99		1999/00		Trend	
Loaned	29%	870	29%	1,047	29%	2,017	43%	1,747	38%	1,259	29%	-28%
Borrowed	71%	2,110	71%	2,532	71%	2,721	57%	2,869	62%	3,107	71%	8.30%
	100%	2,980	100%	3,579	100%	4,738	100%	4,616	100%	4,366	100%	

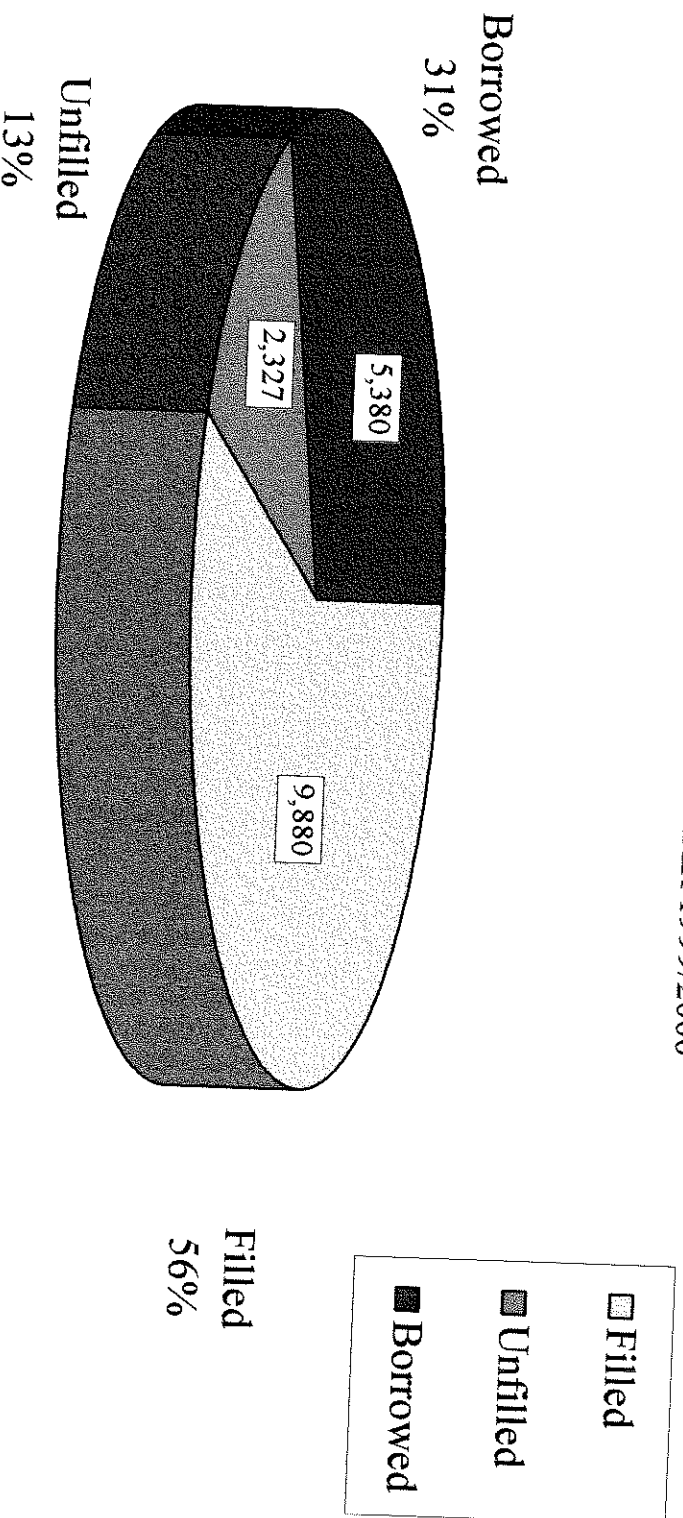
Fiscal Year 1999/2000

Interlibrary Services

	Filled	Unfilled	Referred	Total Received	Borrowed	Grand Total
Photocopy Statistics						
OhioLINK Libraries	5,195	891	0	6,086	3,797	9,883
Other Ohio Libraries	197	89	0	286	4	290
Other Ohio Hospitals	712	190	5	907	18	925
Region 3 Libraries	2,702	689	0	3,391	756	4,147
National Library of Medicine	0	0	0	0	255	255
Cinahl	0	0	0	0	57	57
The Genuine Article	0	0	0	0	8	8
Canada Institute for Scientific & Technical Info.	0	0	0	0	69	69
Other U.S. Libraries	265	254	0	519	151	670
International Libraries	14	14	0	28	1	29
Independent Patrons	290	8	0	298	0	298
Area Health Education Centers	370	14	2	386	0	386
British Library	0	0	0	0	41	41
UnCover	0	0	0	0	46	46
subtotal	9,745	2,149	7	11,901	5,203	17,104
Book Statistics						
OhioLINK Libraries	29	29	0	58	73	131
Other Ohio Libraries	19	11	0	30	9	39
Other Ohio Hospitals	52	58	0	110	1	111
Region 3 Libraries	20	25	0	45	45	90
Other U.S. Libraries	14	40	0	54	25	79
International Libraries	1	5	0	6	0	6
Independent Patrons	0	3	0	3	0	3
Area Health Education Centers	0	0	0		0	0
subtotal	135	171	0	306	153	459
Audio Visual Statistics						
OhioLINK Libraries	0	0	0	0	10	10
Other Ohio Libraries	0	0	0	0	0	0
Other Ohio Hospitals	0	0	0	0	0	0
Region 3 Libraries	0	0	0	0	6	6
Other U.S. Libraries	0	0	0	0	8	8
International Libraries	0	0	0	0	0	0
Independent Patrons	0	0	0	0	0	0
subtotal	0	0	0	0	24	24
Total/Grand Total	9,880	2,320	7	12,207	5,380	17,587

INTERLIBRARY SERVICES

REQUESTS PROCESSED - FISCAL YEAR 1999/2000



TOTAL - 17,587

INTERLIBRARY SERVICES

FISCAL YEAR 1999/2000

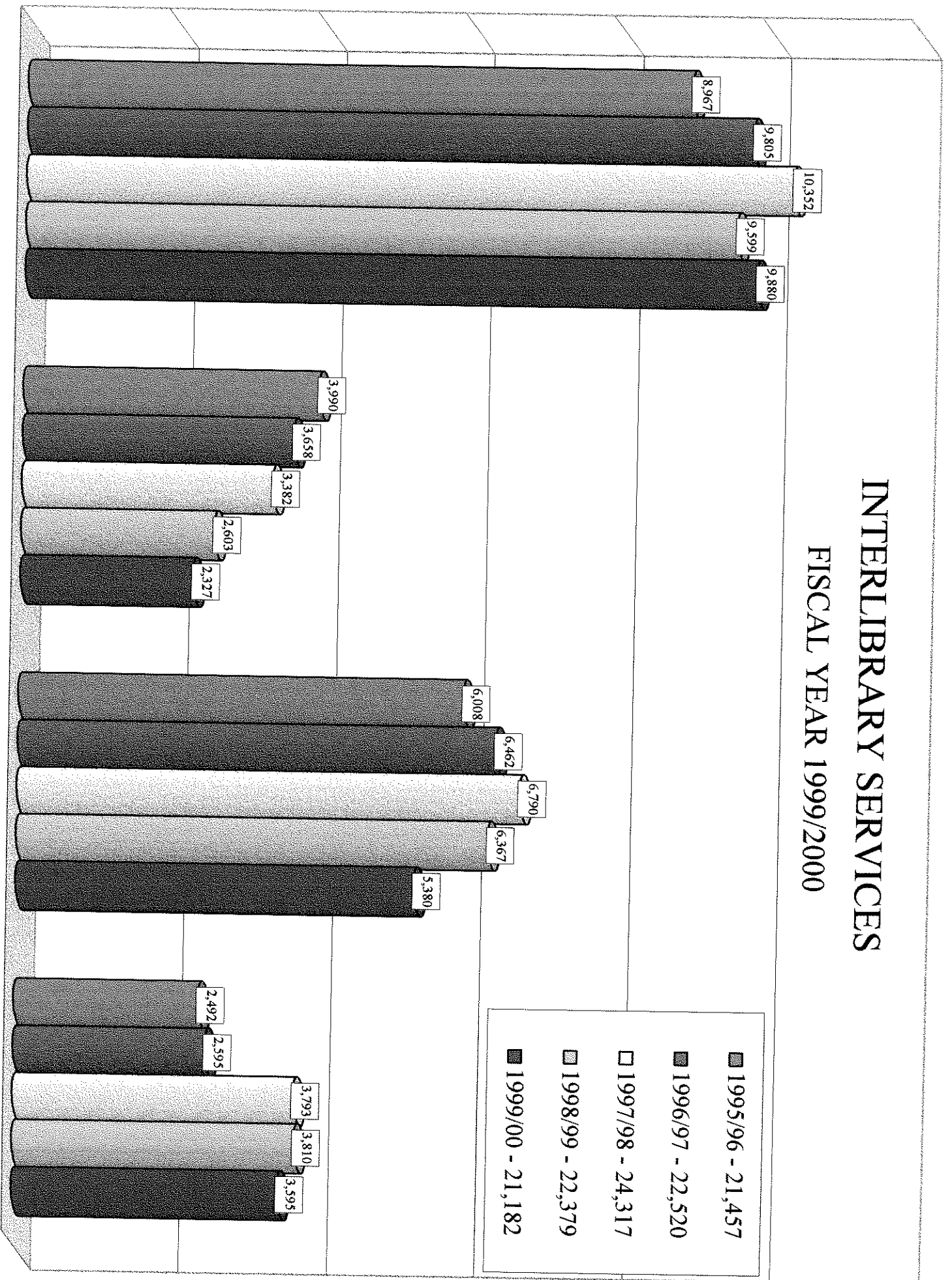
Filled

Unfilled

Borrowed

Copy Service

- 1995/96 - 21,457
- 1996/97 - 22,520
- 1997/98 - 24,317
- 1998/99 - 22,379
- 1999/00 - 21,182



RAYMON H. MULFORD LIBRARY

ACCESS SERVICES

REVENUE REPORT

	1995/96	1996/97	1997/98	1998/99	1999/00
CIRCULATION					
EXTERNAL	7,224.48	7,682.64	7,806.00	6,429.00	6,330.00
CROSSCHARGE	0	0	0	0	0
TOTAL	7,224.48	7,682.64	7,806.00	6,429	6,330.00
INTERLIBRARY SERVICES					
EXTERNAL	33,633.00	37,875.19	35,029.00	29,739	28,700.00
CROSSCHARGE	6,873.50	7,453.50	5,080.00	3,688	4,732.00
TOTAL	40,506.50	45,328.69	40,109.00	33,427	33,432.00
TOTAL ACCESS SERVICES	47,730.98	53,011.33	47,996.00	39,856.00	39,762.00

INTERLIBRARY ARTICLE RETRIEVAL EXPENSE

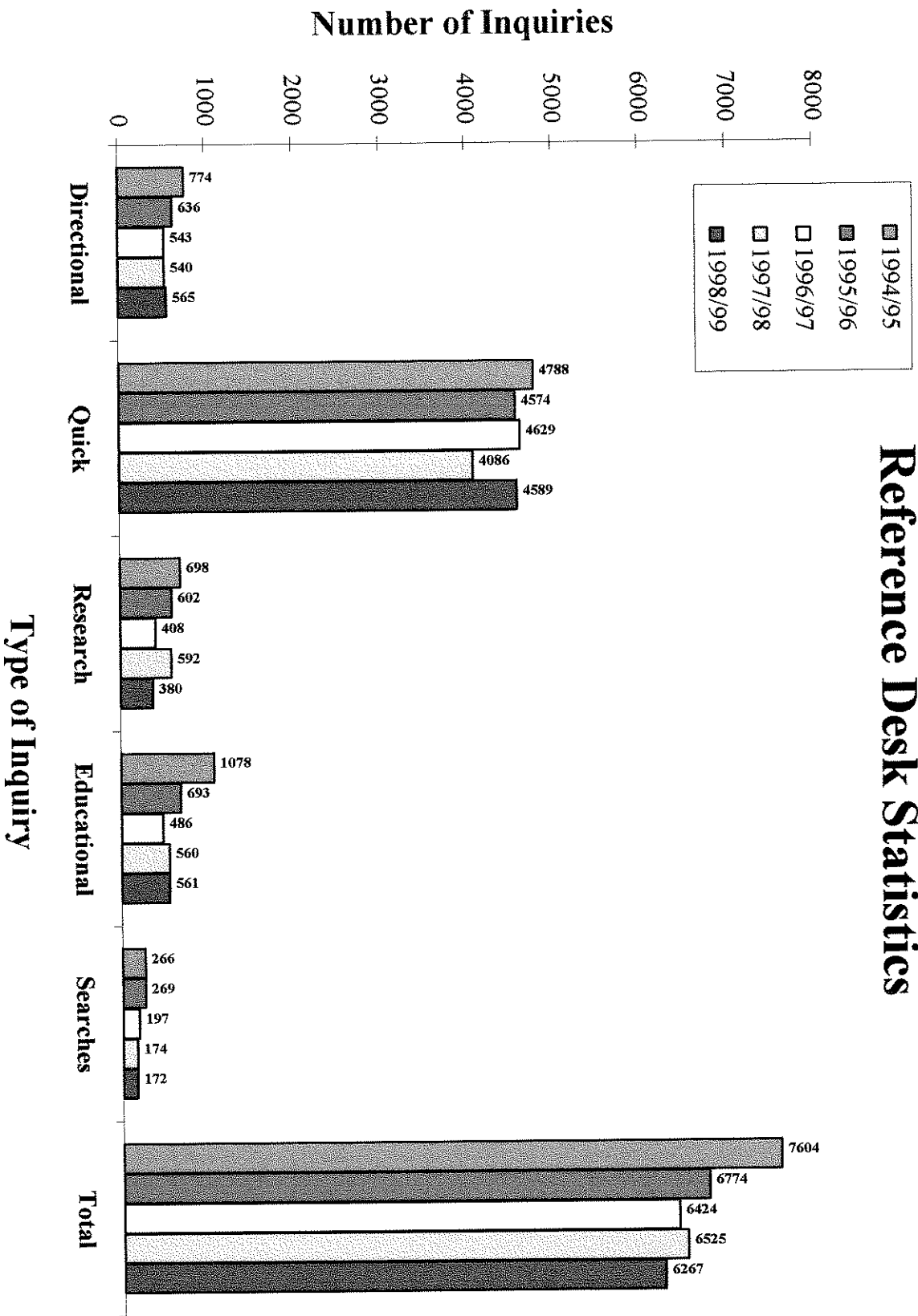
	1995/96	1996/97	1997/98	1998/99	1999/00
VENDOR EXPENSE					
UMI	1,281.35	1,380.00	2,165.00	301.00	N/A
BRITISH LENDING LIBRARY	N/A	N/A	N/A	N/A	888.00
CISTI	N/A	N/A	1,615.00	2,153.00	1,170.00
ISI	1,369.53	1,145.00	978.00	324.00	393.00
UnCOVER	N/A	N/A	N/A	N/A	914.00
TOTAL VENDOR EXPENSE	2,650.88	2,525.00	4,758.00	2,778.00	3,365.00
LIBRARIES	3,697.77	5,093.00	5,397.00	5,597.00	4,393.00
CINAHL	N/A	N/A	N/A	N/A	799.00
NLM	N/A	N/A	4,022.00	4,800.00	N/A
TOTAL ARTICLE RETRIEVAL EXPENSE	6,348.65	7,618.00	14,177.00	13,175.00	8,557.00

Frequently Requested Journals With History of Demand

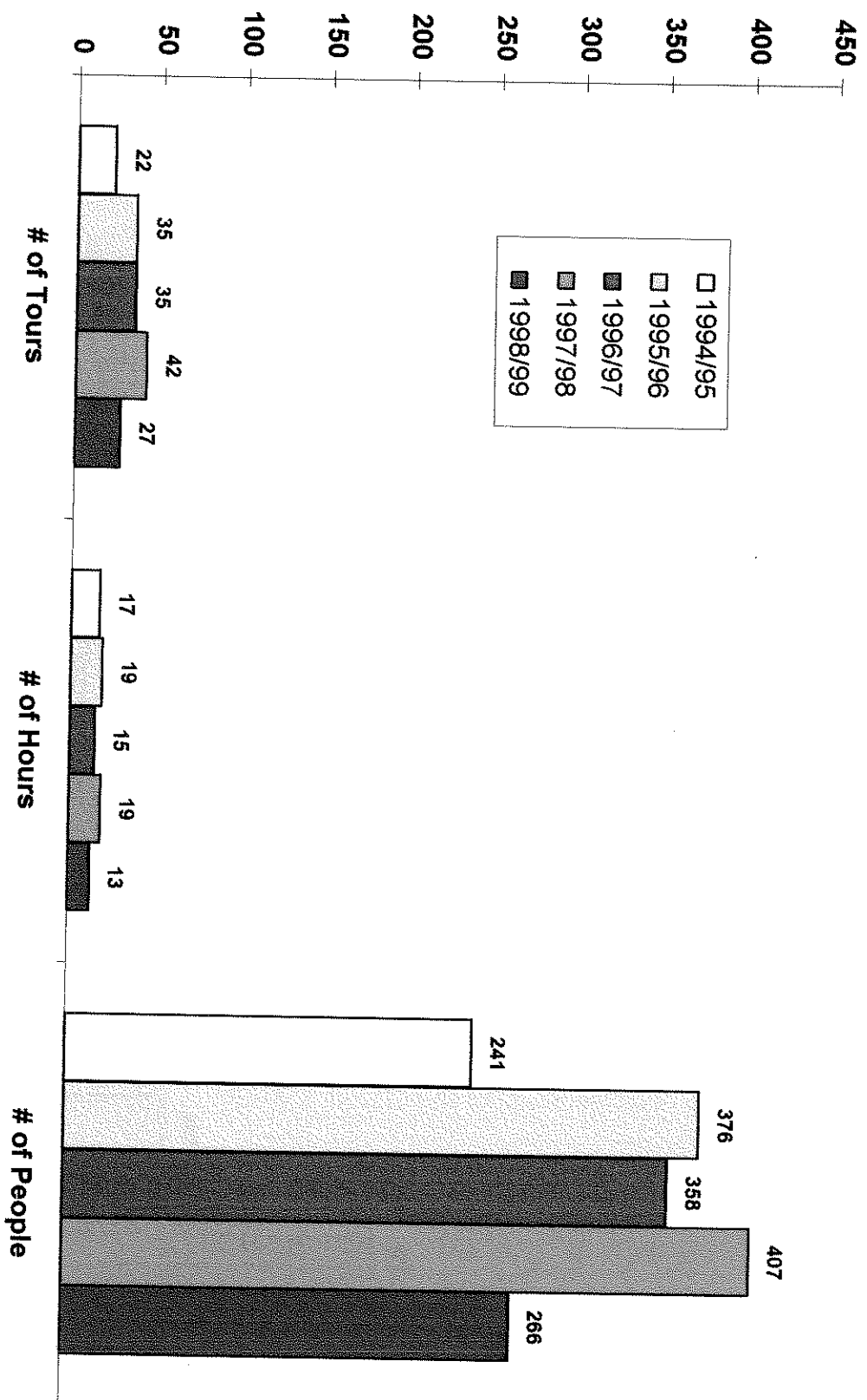
Requested 10 Times or More

Journal Titles	1999/00	1998/99	1997/98	1996/97	1995/96
Allergy	11				
*Alternative Therapies in Health and Medicine	19		15		
American Journal of Medical Genetics	12				
*British Journal of Nursing	12	19	14		14
Cancer Epidemiology, Biomarkers, and Prevention	10				
Cephalagia	14				
**Clinical and Experimental Metastasis	13	15			
Clinical and Experimental Pharmacology and Physiology	10				
Clinical Excellence for Nurse Practitioners	10				
Complementary Therapies in Nursing and Midwifery	17	17			
Epidemiology	14				
European Urology	11				
*Foot and Ankle International	12	16	23		
Haemophilia	20				
Health Care Informatics	20				
Human Molecular Genetics	11		11		15
Human Reproduction	23	17	25		
International Journal of Clinical Practice	11				
International Journal of Eating Disorders	10				
Journal of Applied Microbiology	11				
**Journal of Autism and Developmental Disorders	15				
Journal of Bodywork and Movement Therapies	13				
*Journal of Clinical Psychiatry	25				
Journal of Experimental Biology	12				
Journal of Intellectual Disability Research	10				
Journal of Nursing Management	16				
Journal of the Association of Nurses in Aids Care	11				
*Nurse Education Today	13			13	
Nursing Journal of India	12				
Nursing Spectrum	10	16			
OT Practice	13				
*Professional Nurse	17	12	11		14
Veterinary Clinics of North America Equine Practice	10				
*Recently Added to Collection or Resubscribed					
** Available through the EJC					
These statistics include only the number of requests made for articles published within the last five fiscal years.					
Any requests for articles which were published earlier than this are not included.					

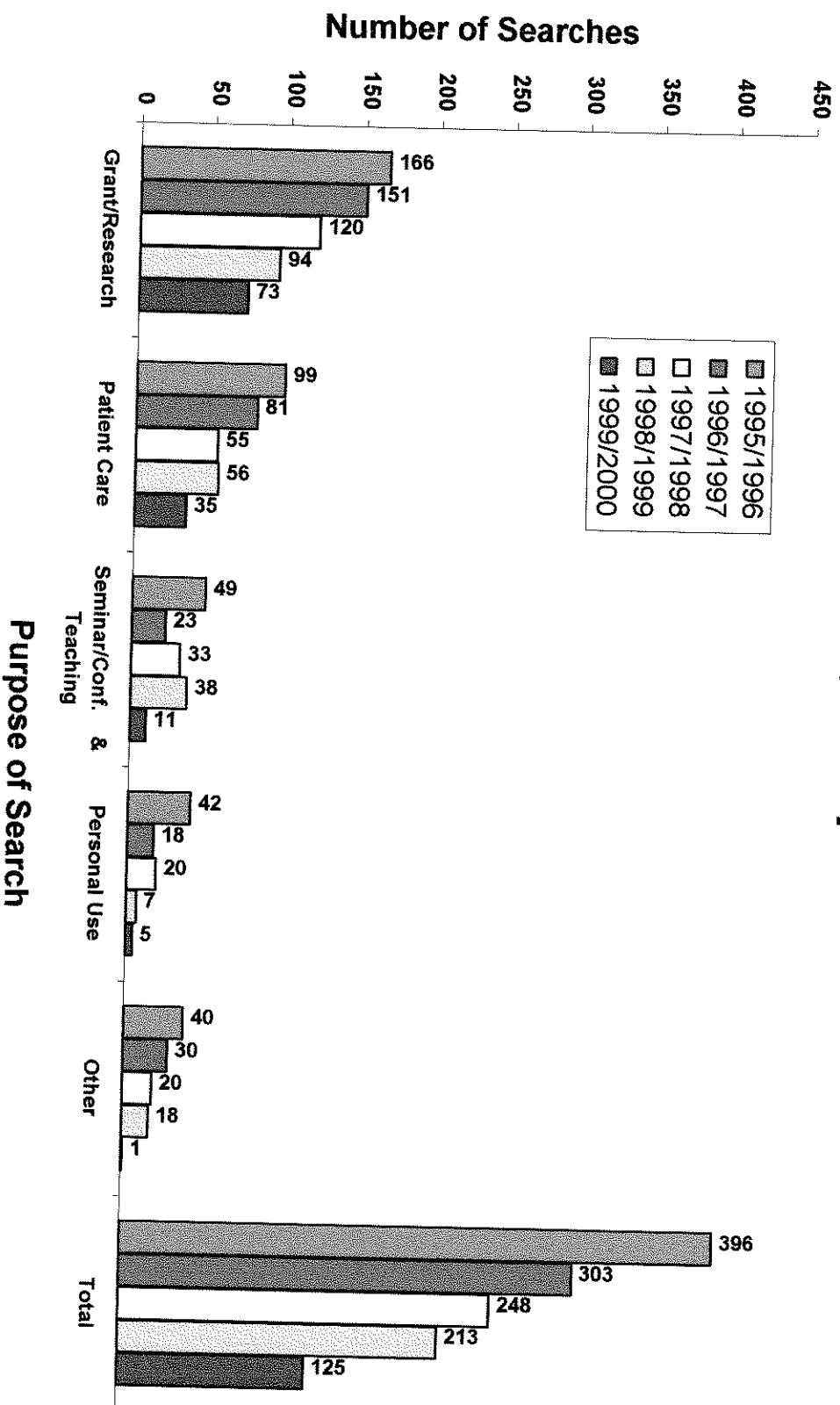
Reference Desk Statistics



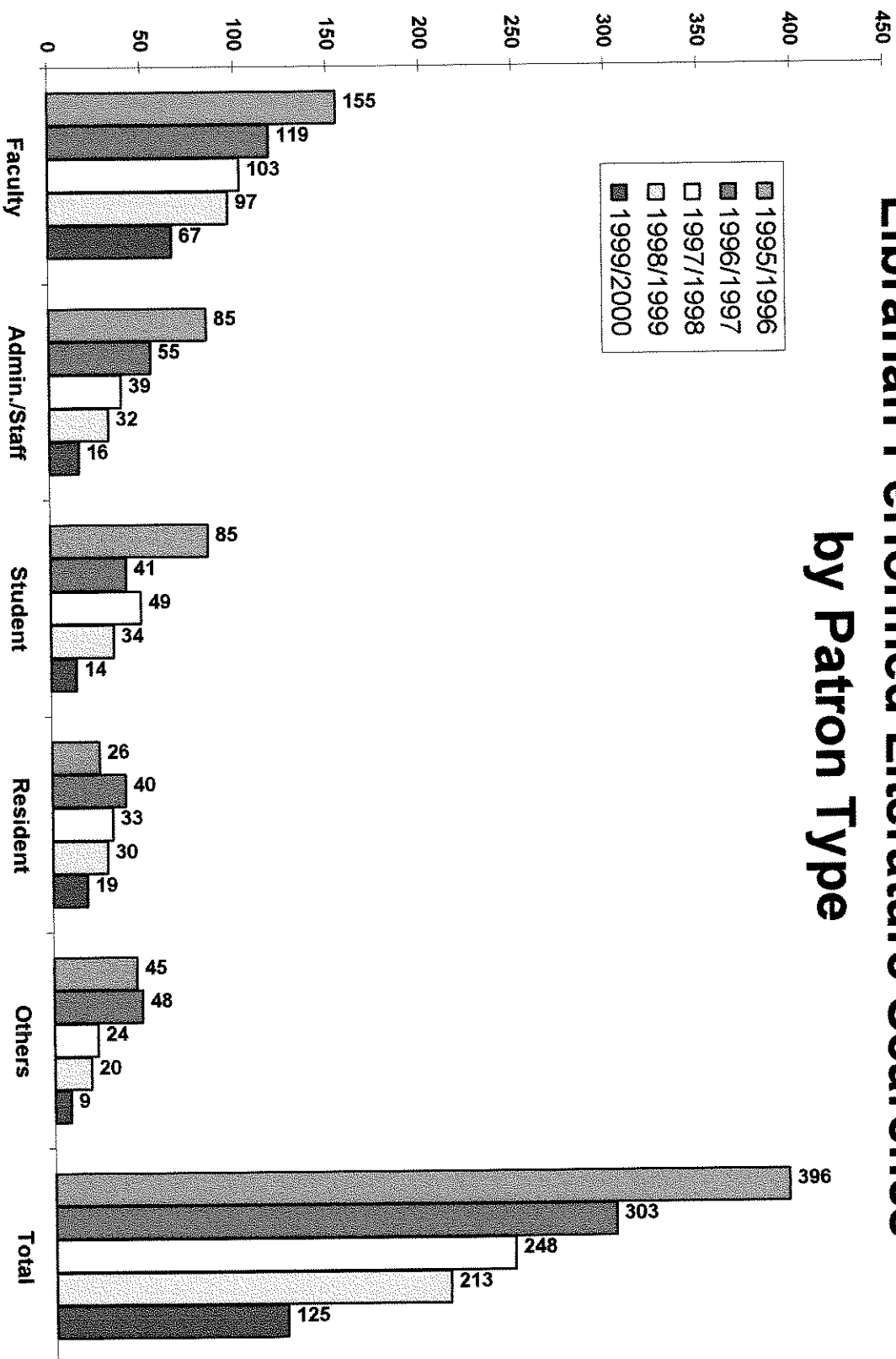
Tour/Orientation Statistics



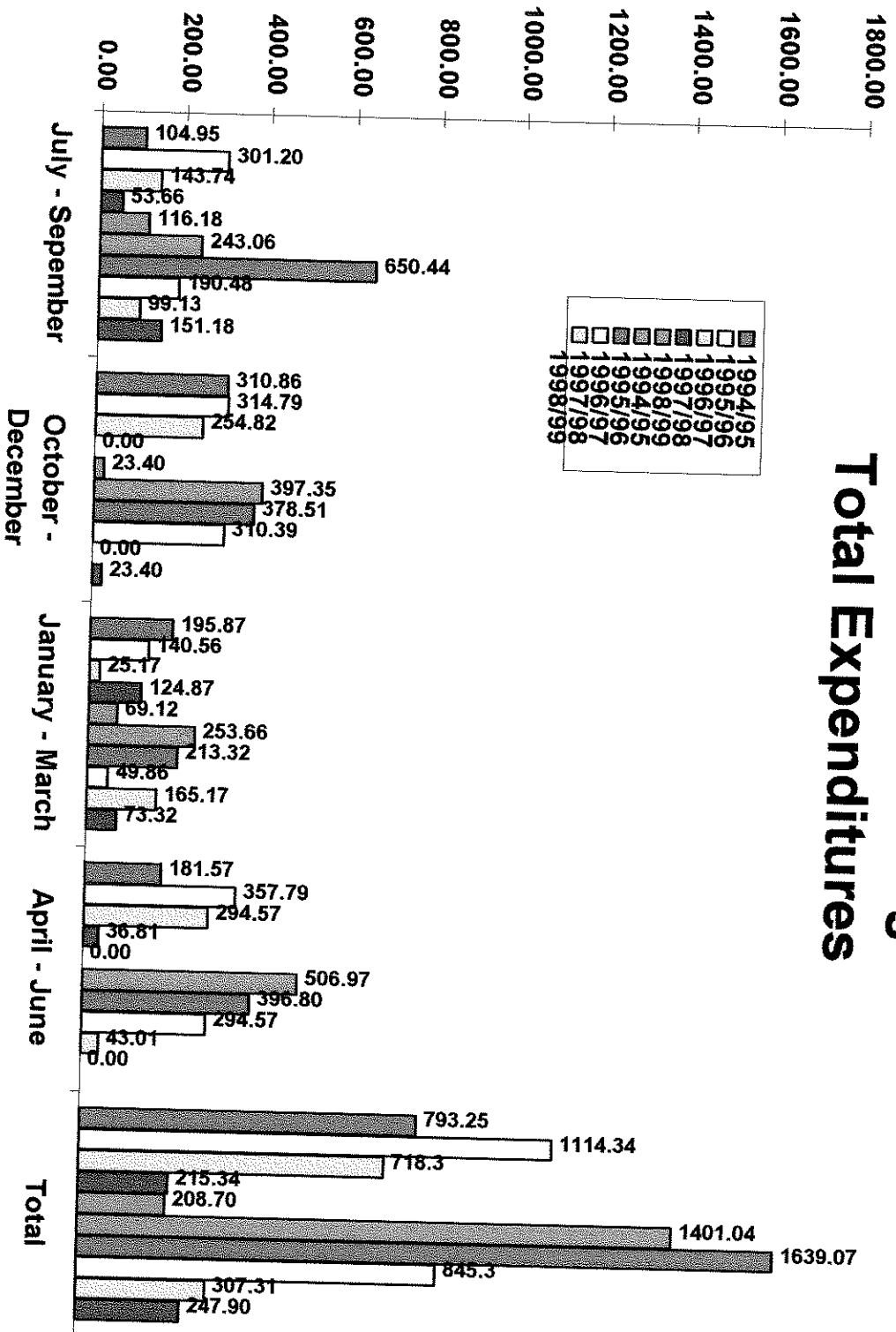
Librarian Performed Literature Searches by Purpose



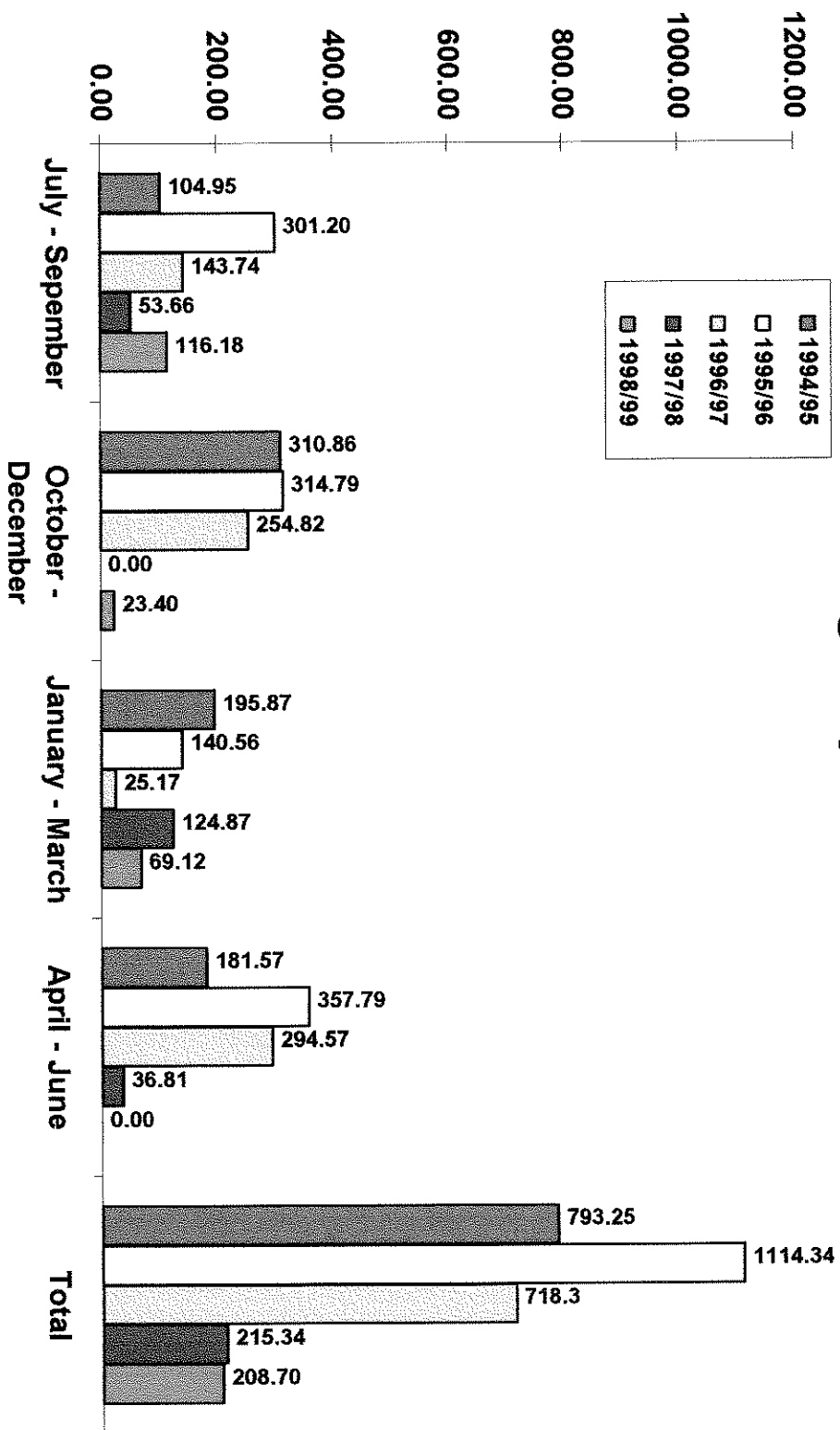
Librarian Performed Literature Searches by Patron Type



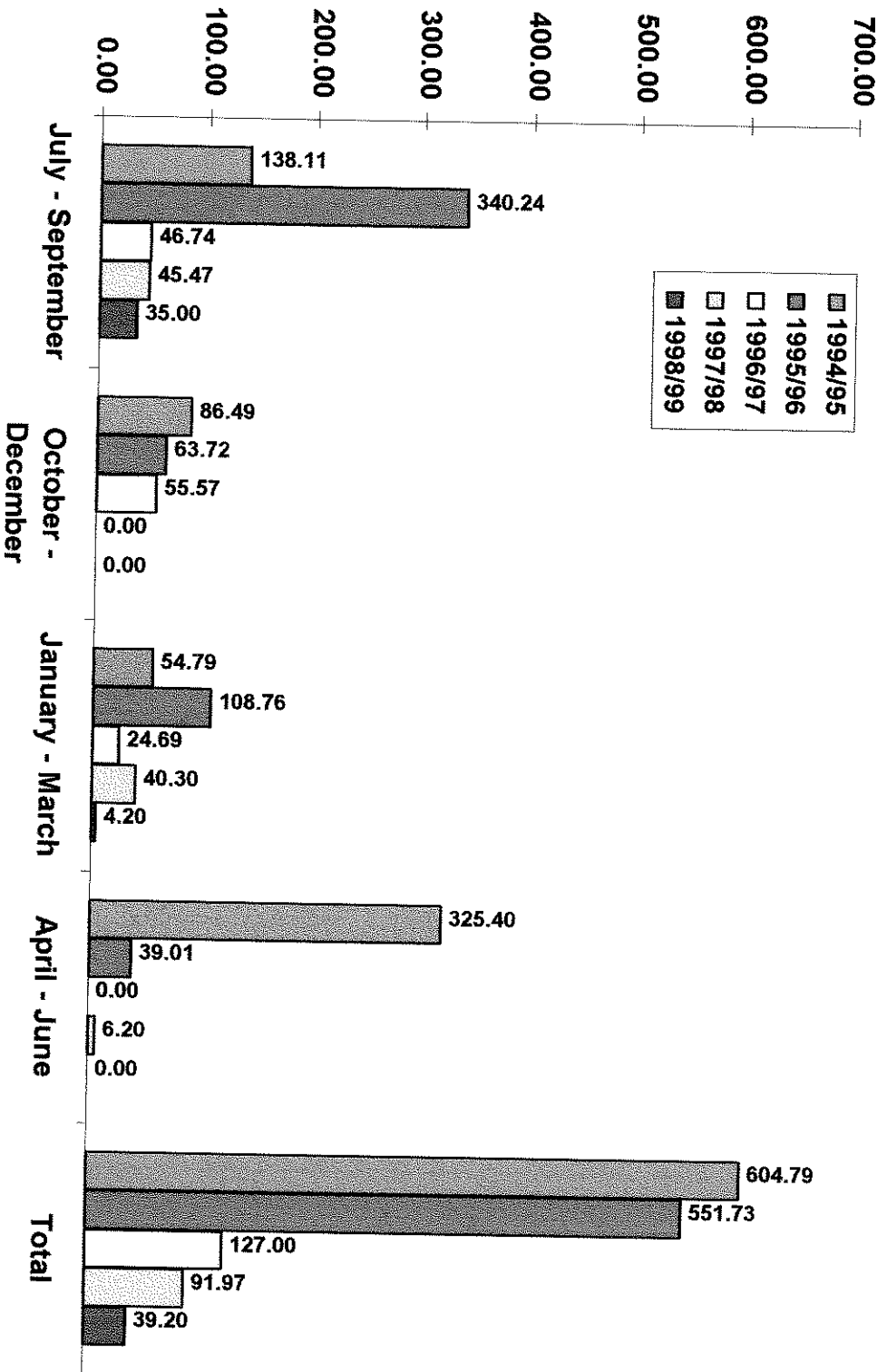
Online Searching Total Expenditures



Online Searching Dialog Expenditures



Online Search Ovid Expenditures



Appendices

Raymon H. Mulford Library Staff

Effective June 30, 2000

Name

Service Date

Administration

David W. Boilard, A.M.L.S. Director Assistant Professor – Department of Family Medicine Adjunct Assistant Professor, School of Allied Health	October 8, 1991
Ginger Bieniek Administrative Assistant	May 12, 1980

Library Services

Jonathan Hartmann, M.L.S. Outreach Librarian Instructor, Department of Medicine	January 3, 1994
P. Scott Lapinski, M.S. Digital Services Librarian Instructor, Department of Pediatrics	December 1, 1997
Barbara A. McNamee, A.M.L.S. Assistant Director for Library Services Instructor, Department of Occupational Therapy	February 12, 1996
Jolene Miller, M.L.S. Education/Reference Librarian Instructor, Department of Physician Assistant Studies	November 1, 1995
Marlene A. Porter, M.L.S. Head of Information Services Instructor, Department of Family Medicine	April 29, 1992
David Remaklus, M.B.A. Manager of Access & Business Services	July 18, 1988
Sheryl R. Stevens, M.S.L.S. Head of Bibliographic Control Instructor, School of Nursing	September 1, 1993
Andrew Biddle (.50 F.T.E.) Access Services Assistant	August 3, 1996

Lonnette Buczko Nights/Weekends Circulation Supervisor	January 29, 1990
Darcy Cheers Serials Assistant	January 19, 1993
Dawn Durivage (.50 F.T.E.) Acquisitions/Cataloging Assistant	November 6, 1986
Elizabeth Fabian Interlibrary Services Assistant	December 7, 1986
Lana Fish (.50 F.T.E.) Access Services Assistant	February 2, 1995
Janice Flahiff Reference Associate	August 23, 1999
Mary Houston Circulation Services Assistant	October 5, 1971
Maria Medlen (.50 F.T.E.) Access Services Assistant	March 14, 1999
Stephanie Robinson (.50 F.T.E.) Access Services Assistant	March 3, 1999
Mary Shadix (.50 F.T.E.) Access Services Assistant	September 24, 1995
Carolyn Sterling Reference Associate	June 7, 1999
Ulonda Sweeney Acquisitions/Cataloging Assistant	January 13, 1997
Rosemary Tammarine Circulation Services Assistant	June 1, 1970

Faculty/Staff Activities

Faculty

David W. Boilard, A.M.L.S., Director of the Library

Assistant Professor of Family Medicine; Adjunct Assistant Professor of Allied Health

Memberships and Committees

Medical Library Association (MLA)
Chair, Fellows and Honorary Members Jury
Chair, MLA/ISI Doctoral Fellowship Jury
Academy of Health Information Professionals, Distinguished Level
Association of Academic Health Science Libraries/AAMC
Editorial Board, Annual Statistics Report
Midwest Chapter of the Medical Library Association
Chair, Nominations Committee
Greater Midwest Chapter of the National Network of Libraries of Medicine
Oversight Committee
American Medical Informatics Association
Ohio Health Science Library Association
OhioLINK
Library Advisory Committee
Multimedia Steering Committee
Cost Sharing (electronic books) Task Force
Health Science Librarians of Northwest Ohio
Toledo Area Library Association
Medical College of Ohio
Library Advisory Committee – ex officio
MCO History Task Force
MCO Computer Use - Internet Task Force
MCO E-Commerce Task Force
MCO E-mail Task Force
Faculty Senate - Alternate Senator, Family Medicine

Activities and Continuing Education

Interviewer: Medical school applicants

Mentor: MLA Academy of Health Information Professionals (for 1 librarian)

Teaching: (contact hours):

"Integrative Pathophysiology" (PBL) Facilitator	(36 hr.)	M-1 block course
"Integrative Pathophysiology – Informatics" Lecturer	(1 hr.)	M-1 block course
Problem-based Learning Lecturer	(1 hr.)	M-2 block course
"Substance Abuse Disorders" Facilitator	(1 hr.)	M-2 block course
"Personal Information Management – Quality Filtering" Lecturer	(4 hr.)	M-4 elective course

Meetings:

Annual Meeting of Medical Library Association, Vancouver, British Columbia, Canada - May 5-9

Education:

Public Health Statistics (3 cr.), MCO - Fall 1999
Principles of Epidemiology (3 cr.), MCO - Spring 2000
Community Health Organizing (3 cr.), UT - Spring 2000
Introduction to Environmental Health (3 cr.), BGSU - Summer (Session I) 2000

Community Service:

Board of Directors, Comprehensive Addiction Services System (COMPASS)

Presentations, Publications, Grants

Grant: "Health Information Network for NW Ohio" - Phase II: \$65,000 NLM

Boilard D, Gale S, Lepow C. "Engineering multi-faceted academic-hospital library collaboration in an institutionally competitive environment" Joint Annual Meeting of the Medical Library Association and the Canadian Health Libraries Association, Vancouver, BC - May 2000

Janice Flahiff, M.L.S., Reference Librarian

Activities & Continuing Education

Trainer:

Introduction to CINAHL
Introduction to MEDLINE

Jonathan Hartmann, M.L.S., Outreach Librarian
Instructor, Department of Medicine

Memberships & Committees

Medical Library Association
Ad Hoc Committee on Achievement Award
Academy of Health Information Professionals
Midwest Chapter of the Medical Library Association
Ohio Health Sciences Library Association

Activities & Continuing Education

Interviewer:

Medical School Applicants

Teaching:

"Personal Information Management – MEDLINE/SCI," Lecturer (4 hrs.) M-4 elective course
"Medical Applications of Computers," Presenter, Napoleon, OH - October 1999
"Medical Applications of Computers," Presenter, Bowling Green, OH - May 2000

Trainer:

MCO Personnel in CINAHL/MEDLINE Classes, September-October 1999
"MedReach: Medical Information Outreach System," Presenter, Bowling Green, OH - August 1999
"MedReach: Medical Information Outreach System," Presenter, Wauseon, OH - November 1999
Medical Student Orientation, August 1999

Meetings:

Medical Library Association Annual Meeting, Vancouver, British Columbia, Canada – May 5-9, 2000
National AHEC Workshop, Louisville, KY - August 1999
Statewide AHEC Retreat, Lore City, OH - October 1999

CE:

"Making a Difference through Outreach," Medical Library Association Annual Meeting,
Vancouver, B.C. - May 2000

Presentations, Publications, Grants

Papers:

Hartmann, J. "A Community-Based AIDS Information Network for Northwest Ohio,"
paper presented at the 1999 National AHEC Workshop, Louisville, KY - August 1999
Hartman, J. "Medical Applications of Computers: An AHEC Educational Program for
Rural Physicians," paper presented at the 1999 National AHEC Workshop, Louisville,
KY - August 1999

P. Scott Lapinski, M.S. Digital Services Librarian
Instructor, Department of Pediatrics

Memberships and Committees

American Society of Information Science (ASIS)
Chair-elect, ASIS Special Interest Group on Electronic Publishing
Reviewer, contributed papers, ASIS 2000 meeting
South-East Michigan Regional ASIS Chapter

Activities and Continuing Education

Teaching:

"Personal Information Management – Procite," Lecturer (6 hrs.) M-4 elective course

Trainer:

Presentation before Pediatrics Residents on Library's Electronic Resources and Access -1 hour
Coordinate and plan individual training sessions for Pediatrics Residents. Conduct 2 sessions.

Meetings:

ASIS Annual Meeting, Washington DC, November 1999

CE:

OHIONET Digitization and Preservation Workshop, May 2000
MCO PBL Facilitator Training, May 2000

Presentations, Publications, Grants

Book Review

Towards the Digital Library: The British Library's *Initiatives for Access* program.
published in JASIS, Oct 1999

Books, Bytes, and Bridges: Libraries and Computer Centers in Academic Institutions
JASIS (forthcoming: Nov 2000)

Panel Presentation

"The Inappropriate: Policies and Politics of Unrestricted Web Access"
ASIS Annual Meeting, Washington DC, November 1999.

Barbara A. McNamee, A.M.L.S., Assistant Director for Library Services
Instructor, Department of Occupational Therapy, School of Allied Health

Memberships and Committees

Medical Library Association (MLA)
Midwest Chapter- MLA (MC/MLA)
American Medical Informatics Association (AMIA)
HealthWeb
OhioLINK Cooperative Information Resources Committee
Medical College of Ohio
Library Advisory Committee (ex officio)
Information Management Committee
Cultural Competence Training Team

Activities and Continuing Education

Teaching

"Personal Information Management – Developing A Plan," Lecturer (6 hrs) M-4 elective

Training

"Library Basics" to SOTA (Student Occupational Therapy Association), October, 1999

"Towards Cultural Competency at MCO" (MCO Faculty & Staff), February 28, 2000; June 28, 2000

Meetings

Annual Meeting of the Medical Library Association, Vancouver, British Columbia, Canada, May 6-10, 2000

CE

"Benchmarking in a High-Tech, Competitive Environment," Medical Library Association CE #243, May 6, 2000, Vancouver, British Columbia, Canada.

Workshops

"Working Effectively in a Unionized Environment," a weekly workshop sponsored by Human Resources, Medical College of Ohio, January-March, 2000.

"Emerging Disabilities on Campus: What You Need to Know" a teleconference sponsored by the ADA Advisory Committee of MCO, March 13, 2000

Problem-Based Learning, MCO Facilitator Training, May, 2000

Presentations

Mental Health Dilemmas Under Managed Care - Ralph Nader, March 28, 2000

Using Bioinformatics to Find Restriction Enzymes - Dr. Richard Roberts, April, 2000

Leading Change - Howard Selland, MCO Board of Trustees, Medical College of Ohio, May 24, 2000

Jolene M. Miller, MLS, Reference/Education Librarian Instructor of Physician Assistant Studies

Memberships and Committees

Medical Library Association

Credentialing Committee Member

Academy of Health Information Professionals

American Library Association

Association of College and Research Libraries

Midwest Chapter of the Medical Library Association

Healthweb

Academic Library Association of Ohio

Activities and Continuing Education

Teaching:

Integrative Pathophysiology (PBL) Facilitator	(36 hrs)	M-1 block course
Pathophysiology Problem-Based Learning Lecturer	(2 hrs)	M-1 block course
Pathophysiology Problem-Based Learning Lecturer	(1 hr)	M-2 block course
"Personal Information Management for the Medical Professions"		
Lecturer and Coordinator	(8 hrs)	M-4
Environmental & Occupational Health Research Methods Lecturer	(2 hrs)	OCCH602
Scientific Inquiry in Physical Therapy Lecturer	(4 hrs)	PT410

Trainer

MEDLINE, CINAHL, and Science Citation Index (total sessions: 28)

New student tours (total sessions: 20)

Internet Resources (total sessions: 10)

Education

Survey Methods in Education	(3 credits)	University of Toledo	Fall, 1999
Structural Equation Modeling	(3 credits)	University of Toledo	Fall, 1999
Measurement II: Rasch Modeling	(3 credits)	University of Toledo	Spring, 1999
Educational Research Design	(3 credits)	University of Toledo	Spring, 1999

CE

OhioLINK Advanced MEDLINE Training, 13 July 1999

OhioLINK NetLibrary Training, Bowling Green State University, 15 November 1999

Ohio Information Literacy Immersion, Kent State University, 16-21 June 2000

Workshops

Teach the Teacher: Educating the Adult Learner, Medical College of Ohio, 15 October 1999

Objective Measurement by Dr. Trevor Bond, Medical College of Ohio, 12 April 2000

Presentations

Bioinformatics lecture by Dr. Richard Roberts, Medical College of Ohio, 4 April 2000

Marlene A. Porter, M.Ln., Head of Information Services
Instructor, Department of Family Medicine

Memberships & Committees:

Service:

American Library Association
American College and Research Libraries
 Membership Committee (intern appointment - term begins July 2000)
Medical Library Association
 Public Services Section
 Information Management Education SIG (chairperson – May 1999-Present)
Midwest Chapter of the Medical Library Association
Academic Library Association of Ohio
Ohio Health Sciences Library Association
 Communications Committee
 Secretary (elected Spring 2000 - 2 year term)
OhioLINK
 User Services Committee
 Subcommittee on Multi-Database Searching (chairperson)
 OhioLINK Dataware training (trainer)
Medical College of Ohio
 Faculty Club
 Faculty Club Board
 Faculty Senate Alternate (Family Medicine)
 Library Audio Visual and Patient Education Committee (Family Medicine) (chairperson)

Activities & Continuing Education

Interviewer

Medical School Applicants

Teaching

Integrative PathoPhysiology Lecturer	(2 hr.)	M-1 block course
"Problem Based Learning" Lecturer	(1 hr.)	M-2 block course
"Personal Information Management" Lecturer	(4 hr.)	M-4 block elective course

Trainer

BSN Nursing Student Tours
New Faculty Orientation
Advanced OhioLINK MEDLINE training for Library personnel
MD Consult Demonstration for Library personnel
MCO personnel in Internet use
Hispanic Grant Training/visits: July, Sept., Nov. 1999, Jan., April, June 2000
MEDLINE/CINAHL training for MCO: September - November 1999, May 2000
Family Medicine Residents in Netscape & WWW, StatREF! & MAXX, MEDLINE
& Electronic Journals and MD Consult & Ovid EBM

Workshops

Introduction to Classroom Technology (August 1999)
American Disabilities Act Teleconference (March 2000)
Measuring Outcomes (MCO Faculty Development workshop) (April 2000)

Presentation

Leading Change (Howard Selland, Vice-Chair MCO Board) (May 2000)

Sheryl R. Stevens, M.S.L.S., Head of Bibliographic Control
Instructor, School of Nursing

Memberships & Committees

Medical Library Association
Nursing and Allied Health Section
Technical Services Section
Academy of Health Information Professionals, Distinguished Level
North Atlantic Serials Interest Group
Health Sciences OCLC Users Group
Midwest Chapter/Medical Library Association
Executive Board Member
Education Committee Chair
Ohio Health Sciences Library Association
OhioLINK Database Management Standards Committee
MCO Curriculum Subcommittee of the Multicultural Affairs Advisory Committee

Activities & Continuing Education

Trainer

Conducted multiple training sessions in the use of grant funded merged catalog with support staff and librarians at Mercy College, St. Vincent Hospital, Toledo Hospital and Flower Hospital.

Meetings

Midwest Chapter/Medical Library Association, Grand Rapids, MI -- October 1999

Presentation, Publications, Grants

Publication

"Mapping the Literature of Cytotechnology," Bulletin of the Medical Library Association, April 2000; 88(2): 172-177.

Presentation:

"The Technical Services Challenges of Managing Electronic Journals," Midwest Chapter/Medical Library Association Meeting, Grand Rapids, MI -- October 1999

Staff

Andrew Biddle, Circulation Assistant

Activities & Continuing Education

CE:

Microsoft Excel Intro -- MCO
Microsoft Excel Charts & Databases -- MCO
Microsoft Excel Tools & Formulas -- MCO
Towards Cultural Diversity at MCO -- Tulin DiversiTeam Assoc., Toledo

Workshop:

Telephone Workshop -- MCO
OhioLINK Regional Briefing -- BGSU

Training:

Advanced Dataware MEDLINE
MD CONSULT orientation and review

Dawn Durivage, Serials Assistant

Activities & Continuing Education

CE

Basic Medical Terminology Course

Stephanie Robinson, Circulation Assistant

Activities & Continuing Education

CE

Cultural Diversity at MCO

Workshop

Telephone Workshop

Training

Advanced Medline Training: "Beyond the Basics"

MDConsult

Carolyn Sterling, B.S., Reference Associate

Activities & Continuing Education

Trainer

School of Medicine Orientation Tours

CE

Basic Medical Terminology Course

GroupWise Training

Towards Cultural Diversity at MCO

Workshop

Voicemail Training

Training

MD Consult Orientation

Advanced MEDLINE Training "Beyond The Basics"

Ulonda Sweeney, Acquisitions/Cataloging Assistant

Activities & Continuing Education

Education

American National Government

Interpersonal Communication

Creative Writing

Biology Of Human Contraception

Persuasion Theory

Culture & Communication

Health Problems Of Youth

Business Principles

Drug Awareness

Geology Of National Parks

Raymon H. Mulford Library Staff Changes – 1999-2000

Library Services

Maria Medlen promoted to permanent Access Services Assistant– July 1999
Alicia Conklin resigned as Access Services Assistant – August 1999
Cynthia Stroud resigned as Interlibrary Services Supervisor – August 1999
Janice Flahiff hired as Reference Librarian – August 1999
Mary Shadix hired as Access Services Assistant – November 1999

Student Staff

Allison Glauser resigned from Interlibrary Services – July 1999
Kelleigh Allen hired for Interlibrary Services – July 1999 thru April 2000
Janna Frome resigned from Interlibrary Services – August 1999
Andrea Elliott hired for Interlibrary Services – August 1999 thru May 2000
Jessica Schneider hired for Interlibrary Services – September 1999
Joni Lewis hired for Circulation Services – October 1999
Sara Wisniewski resigned from Interlibrary Services – June 2000

Library Advisory Committee FY 1999-2000

Nicholas Chiaia, Ph.D. (Chairman)

Kathryn Boehm, M.D.

David Boilard, A.M.L.S. (ex-officio)

Ray Brinker, M.D.

Keith Crist, Ph.D.

Cristin Coco (graduate student)

Jeffrey Jablonski, Ph.D. (ex-officio)

Wun Jung Kim, M.D.

Patrick McIntyre (medical student)

Paul Lehmann, Ph.D.

Barbara McNamee, A.M.L.S. (ex-officio)

Nikolai Modyanov, Ph.D.

Martin Rice, Ph.D.

Tracy Szirony, M.S.N., R.N.

Meeting Dates:

October 19, 1999

March 22, 2000

Minutes of the Library Advisory Committee meetings are available upon request in the Raymon H. Mulford Library administrative office.

Gifts To The Raymon H. Mulford Library

The Library would like to thank the following individuals for their generosity in donating cash gifts:

Marlene A. Porter, M.L.S.

David W. Boilard, A.M.L.S.

Jolene M. Miller, M.L.S.

Department of Biochemistry & Molecular Biology
University of Kansas Medical Center
School of Medicine
Kansas City, Kansas
(In Honor of Dr. Murray Saffran)